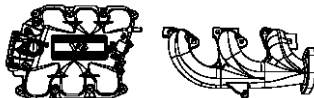


**Group - 009EGT**  
**3.8L Gas; Engine**

**009EGT-100**  
Engine Identification



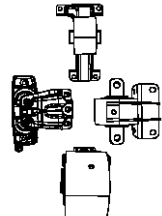
**009EGT-1000**  
Manifolds and Vacuum Fittings



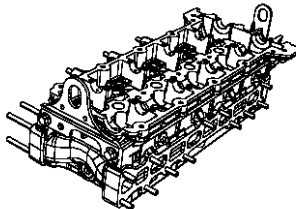
**009EGT-1100**  
Crankcase Ventilation



**009EGT-1200**  
Engine Mounting

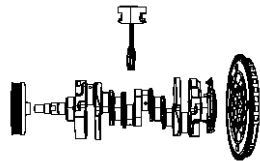


**009EGT-200**  
Cylinder Head

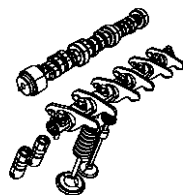


**009EGT-300**  
Cylinder Block

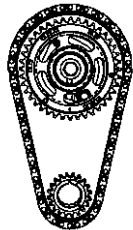
**009EGT-400**  
Crankshaft, Piston, Drive Plate, Flywheel, and Damper



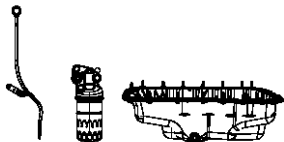
**009EGT-500**  
Camshaft and Valve



**009EGT-600**  
Timing Belt/Chain and Cover and Balance Shaft



**009EGT-700**  
Engine Oiling, Oil Pan and Indicator (Dipstick)



Group - 009EGT 3.8L Gas; Engine

Illustration TitleGroup-Fig. No.

Engine Identification

Engine Assembly And Identification 3.8L [EGT] ..... Fig. 009EGT - 105  
Engine Gasket Packages 3.8L [EGT]..... Fig. 009EGT - 145

Cylinder Head

Cylinder Head Covers 3.8L [EGT] ..... Fig. 009EGT - 205  
Cylinder Heads 3.8L [EGT]..... Fig. 009EGT - 225

Cylinder Block

Engine Cylinder Block And Hardware 3.8L [EGT] ..... Fig. 009EGT - 305  
Engine Cylinder Block Heater 3.8L [EGT]..... Fig. 009EGT - 325

Crankshaft, Piston, Drive Plate, Flywheel, and Damper

Crankshaft, Crankshaft Bearings, Damper Flexplate And Flywheel 3.8L [EGT] ..... Fig. 009EGT - 405  
Pistons, Piston Rings, Connecting Rods And Connecting Rod Bearings 3.8L [EGT]..... Fig. 009EGT - 425

Camshaft and Valve

Camshafts And Valvetrain 3.8L [EGT]..... Fig. 009EGT - 505

Timing Belt/Chain and Cover and Balance Shaft

Timing Case Cover 3.8L [EGT] ..... Fig. 009EGT - 605  
Timing System 3.8L [EGT] ..... Fig. 009EGT - 625

Engine Oiling, Oil Pan and Indicator (Dipstick)

Engine Oiling Pump 3.8L [EGT]..... Fig. 009EGT - 705  
Engine Oil Pan, Engine Oil Level Indicator, And Related Parts 3.8L [EGT] ..... Fig. 009EGT - 725  
Engine Oil Filter 3.8L [EGT] ..... Fig. 009EGT - 745

Manifolds and Vacuum Fittings

Exhaust Manifold And Heat Shields 3.8L [EGT] ..... Fig. 009EGT - 1005  
Intake Manifold Plenum 3.8L [EGT]..... Fig. 009EGT - 1025  
Lower Intake Manifold 3.8L [EGT] ..... Fig. 009EGT - 1065

Crankcase Ventilation

Crankcase Ventilation 3.8L [EGT]..... Fig. 009EGT - 1105

Engine Mounting

Engine Mounting 3.8L [EGT] ..... Fig. 009EGT - 1205

Engine Assembly And Identification 3.8L [EGT]  
Figure 009EGT-105

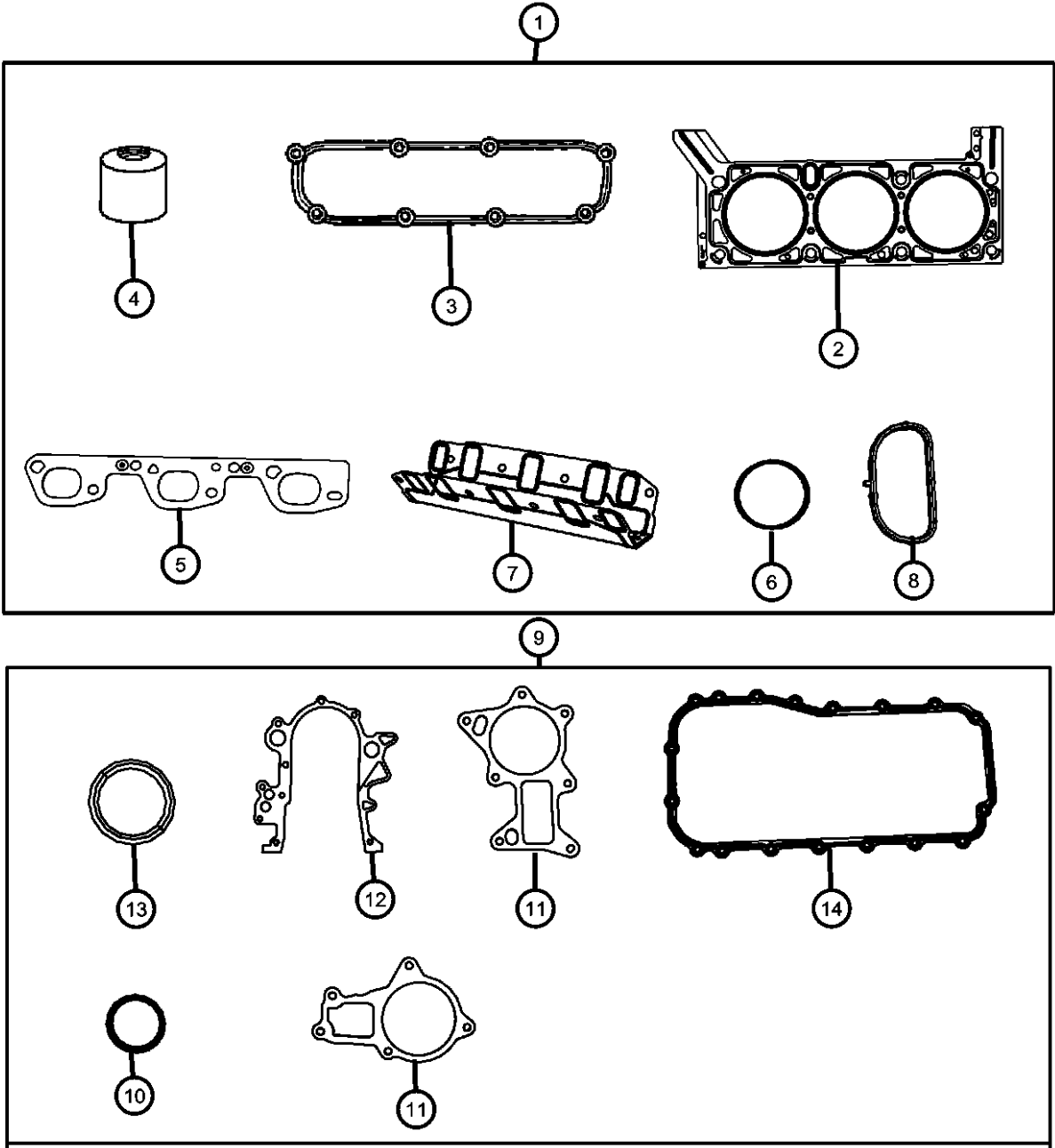
ITEM	PART NUMBER	QTY	LINE	SERIES	BODY	ENGINE	TRANS	TRIM	DESCRIPTION
------	-------------	-----	------	--------	------	--------	-------	------	-------------

NOTE:  
The Engine Identification Label Contains: The Production Assembly Part Number And Displacement.  
Sales Codes:  
[DBB] = All Manual Transmissions  
[DEH] = 6-Speed Manual NSG370 Transmission  
[DGQ] = 5-Speed Automatic 545RFE Transmission  
[DGV] = 4-Speed Automatic VLP 42RLE Transmission  
[DG0] = All Automatic Transmissions  
[DHE] = Manual Shift On The Fly NVG 241 Generation II Transfer Case  
[DHW] = 4:1 Rock-Trac H.D. Part Time 4WD NVG 241 Transfer Case  
[EGT] = 3.8L V-6 SMPI Engine  
[EG0] = All V-6 Engines  
[ENS] = 2.8L 4 Cylinder Turbo Diesel Next Generation  
[EN0] = All Turbo Diesel Engines  
[NAA] = Federal Emissions  
[NAE] = California Emissions  
[NAS] = 50 State Emissions  
[NA1] = Export Emissions  
[XEF] = Transfer Case Skid Plate Shield

1		1							ENGINE, Complete, Serviced By New Short Block, (NOT SERVICED),
2		1							LABEL, Engine Identification, See Note, (NOT SERVICED)
3									EMBLEM
	04648919AA	1	J, U			EGT			
		1	J, T, U			EGT			

WRANGLER (JK)				
SERIES	LINE	BODY	ENGINE	TRANSMISSION
P = PREMIUM	T = JEEP - 2WD	72 = SPORT UTILITY 2-DR	EGT = 3.8L V6 SMPI Engine	DEH = 6-Speed Manual NSG370
S = SPORT	J = JEEP - 4WD	TYPE #2	ENS = 2.8L 4 Cyl TD Next	Transmission
M = MEDIUM	U = JEEP - 4WD (RHD)	74 = SPORT UTILITY 4-DR	Generation Engine	DGV = 4-Spd. Automatic VLP 42RLE
L = LOWLINE		TYPE #4		Trans
				DGQ = 5-Spd Automatic 545RFE
				Transmission

Engine Gasket Packages 3.8L [EGT]  
Figure 009EGT-145

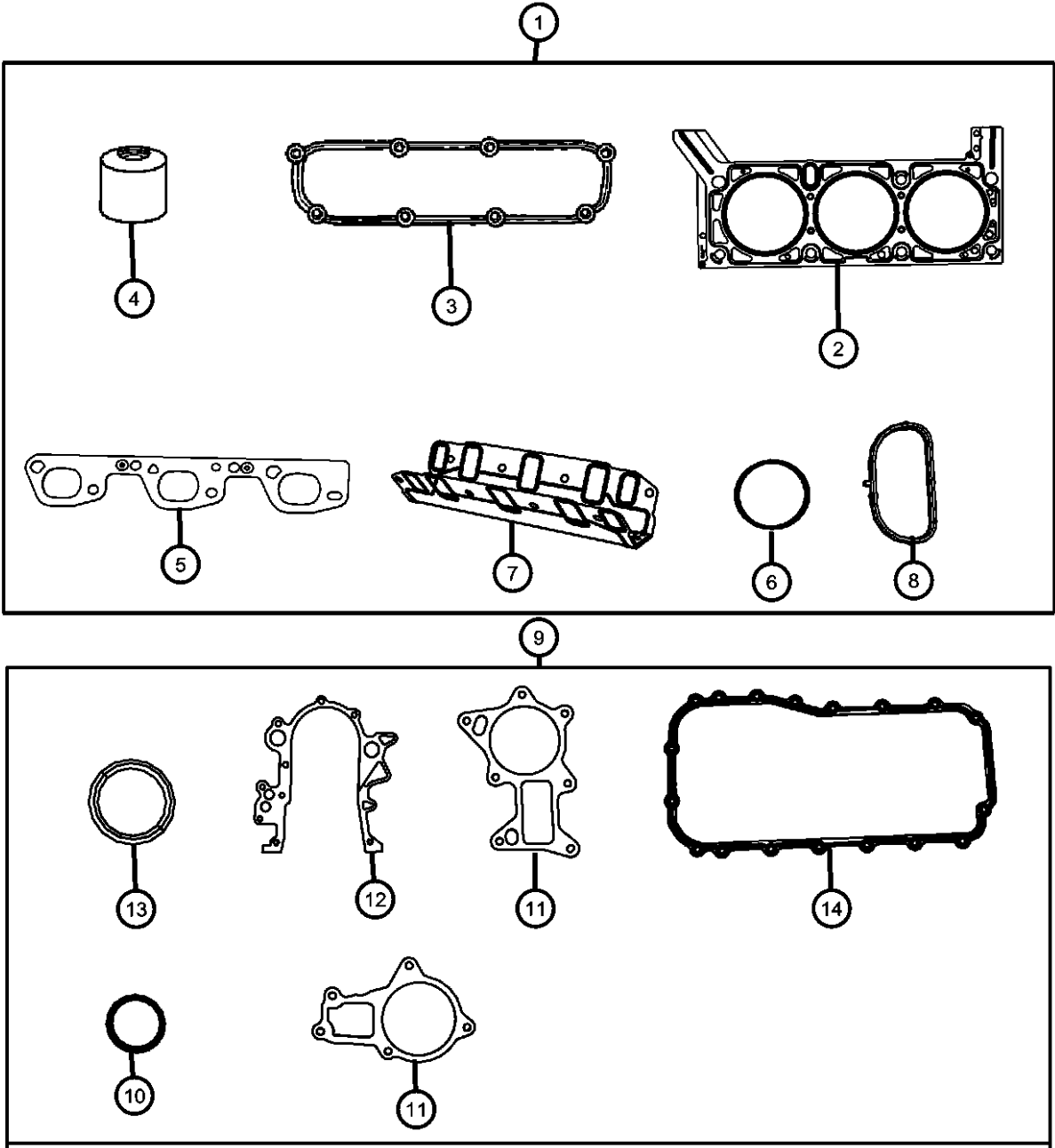


ITEM	PART NUMBER	QTY	LINE	SERIES	BODY	ENGINE	TRANS	TRIM	DESCRIPTION
NOTE: Sales Codes: [DBB] = All Manual Transmissions [DEH] = 6-Speed Manual NSG370 Transmission [DGQ] = 5-Speed Automatic 545RFE Transmission [DGV] = 4-Speed Automatic VLP 42RLE Transmission [DG0] = All Automatic Transmissions [DHE] = Manual Shift On The Fly NVG 241 Generation II Transfer Case [DHW] = 4:1 Rock-Trac H.D. Part Time 4WD NVG 241 Transfer Case [EGT] = 3.8L V-6 SMPI Engine [EG0] = All V-6 Engines [ENS] = 2.8L 4 Cylinder Turbo Diesel Next Generation [EN0] = All Turbo Diesel Engines [NAA] = Federal Emissions [NAE] = California Emissions [NAS] = 50 State Emissions [NA1] = Export Emissions [XEF] = Transfer Case Skid Plate Shield									
1	68003427AB	1	J, U			EGT	DGV		GASKET PACKAGE, Engine Upper
		1	J, T, U			EGT	DGV		
		1	J, U			EGT	DEH		
		1	J, T, U			EGT	DEH		
2	04666033AB	1	J, U			EGT			GASKET, Cylinder Head, Left
		1	J, T, U			EGT			Left
	04666034AB	1	J, U			EGT			Right
		1	J, T, U			EGT			Right
3	04648987AA	1	J, U			EGT			GASKET, Cylinder Cover
		1	J, T, U			EGT			Left
		1	J, U			EGT			Left
		1	J, T, U			EGT			Right
		1	J, T, U			EGT			Right
4	04781072AB	12	J, U			EGT			SEAL, Valve Guide
		12	J, T, U			EGT			
5	04892409AA	2	J, U			EGT			GASKET, Exhaust Manifold
		2	J, T, U			EGT			Right And Left
		2	J, T, U			EGT			Right And Left

WRANGLER (JK)		BODY		ENGINE		TRANSMISSION	
SERIES	LINE						
P = PREMIUM	T = JEEP - 2WD	72 = SPORT UTILITY 2-DR		EGT = 3.8L V6 SMPI Engine		DEH = 6-Speed Manual NSG370	
S = SPORT	J = JEEP - 4WD	TYPE #2		ENS = 2.8L 4 Cyl TD Next		Transmission	
M = MEDIUM	U = JEEP - 4WD (RHD)	74 = SPORT UTILITY 4-DR		Generation Engine		DGV = 4-Spd. Automatic VLP 42RLE	
L = LOWLINE		TYPE #4				Trans	
						DGQ = 5-Spd Automatic 545RFE	
						Transmission	

AR = use ase required - = Non illustrated part

Engine Gasket Packages 3.8L [EGT]  
Figure 009EGT-145

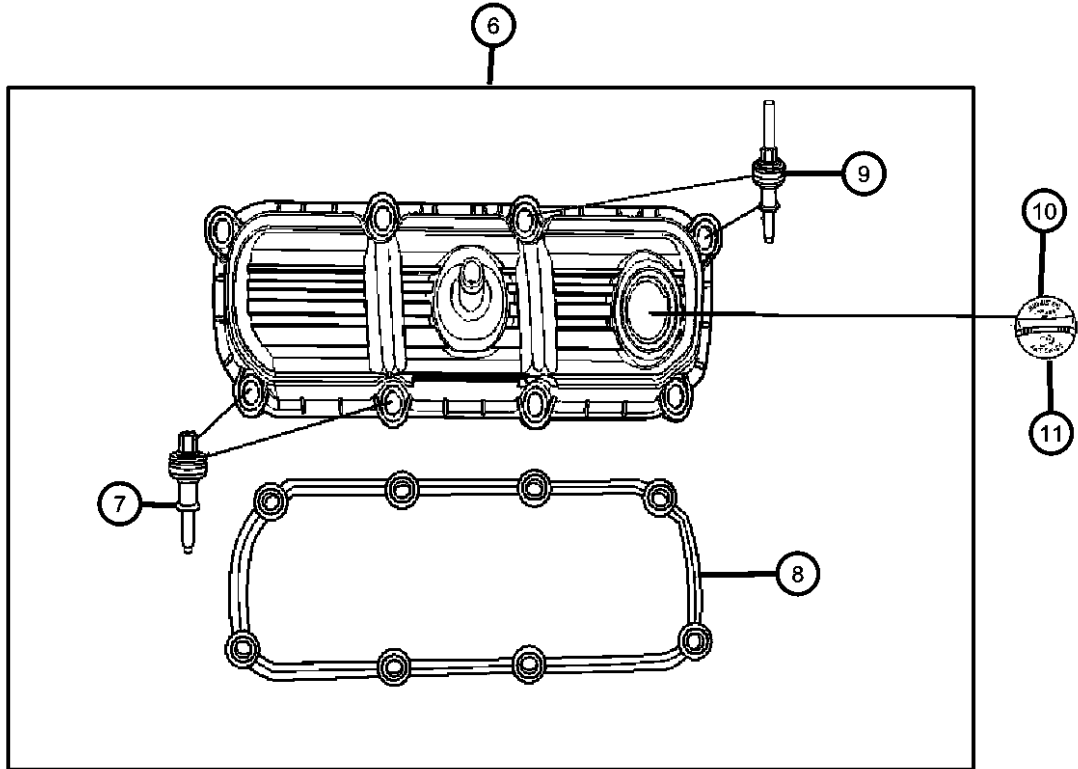
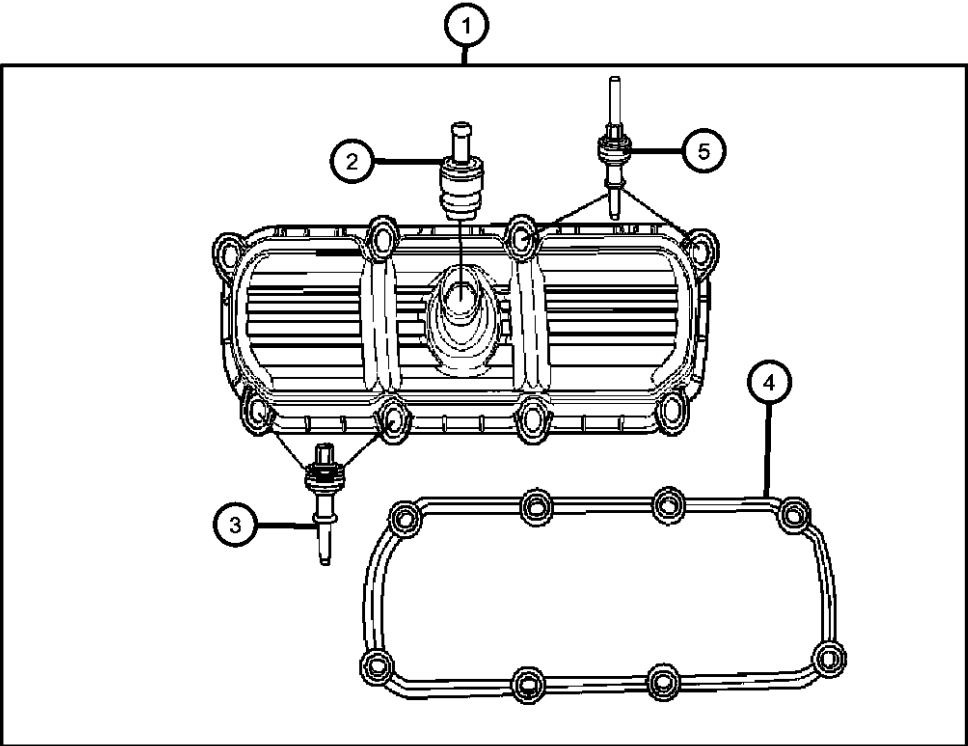


ITEM	PART NUMBER	QTY	LINE	SERIES	BODY	ENGINE	TRANS	TRIM	DESCRIPTION
6	04666113AA	1	J, U			EGT			GASKET, Throttle Body
		1	J, T, U			EGT			
7	04781034AB	1	J, U			EGT			GASKET, Intake Manifold
		1	J, T, U			EGT			
8	04781580AA	6	J, U			EGT			SEAL, Intake Manifold
		6	J, T, U			EGT			
9	68029544AB	1	J, U			EGT	DGV		GASKET PACKAGE, Engine Lower
		1	J, T, U			EGT	DGV		
		1	J, U			EGT	DEH		
		1	J, T, U			EGT	DEH		
10	06032920	1	J, U			EGT			SEAL, Oil Pick Up Tube
		1	J, T, U			EGT			
11	04666068AA	1	J, U			EGT			GASKET, Water Pump
		1	J, T, U			EGT			Lower Gasket Package
									68029544AB Also Contains
									Water Pump Gasket
									04648963AC Used For Other
									Applications
12	04621987AC	1	J, U			EGT			GASKET, Chain Case Cover
		1	J, T, U			EGT			
13	04273275	1	J, U			EGT			SEAL, Crankshaft Oil, Front
		1	J, T, U			EGT			
14	04448896AB	1	J, U			EGT			GASKET, Oil Pan
		1	J, T, U			EGT			

WRANGLER (JK)		BODY		ENGINE	TRANSMISSION
SERIES	LINE				
P = PREMIUM	T = JEEP - 2WD	72 = SPORT UTILITY 2-DR		EGT = 3.8L V6 SMPI Engine	DEH = 6-Speed Manual NSG370
S = SPORT	J = JEEP - 4WD	TYPE #2		ENS = 2.8L 4 Cyl TD Next	Transmission
M = MEDIUM	U = JEEP - 4WD (RHD)	74 = SPORT UTILITY 4-DR		Generation Engine	DGV = 4-Spd. Automatic VLP 42RLE
L = LOWLINE		TYPE #4			Trans
					DGQ = 5-Spd Automatic 545RFE
					Transmission

AR = use ase required - = Non illustrated part

Cylinder Head Covers 3.8L [EGT]  
Figure 009EGT-205



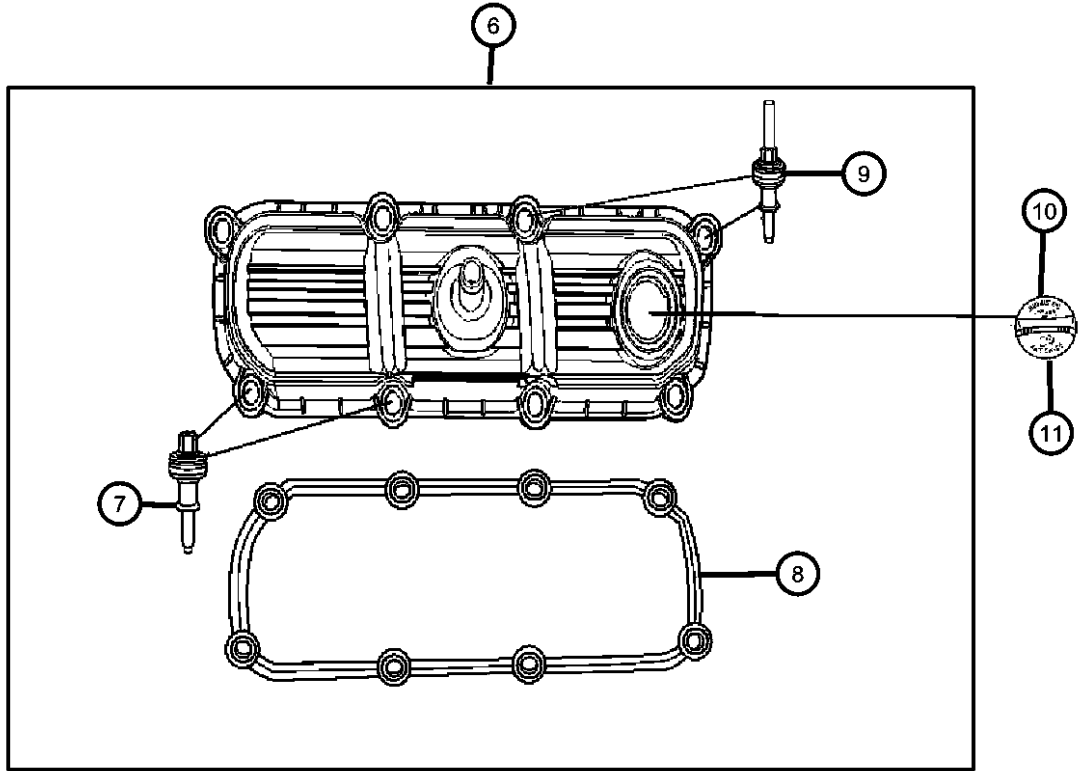
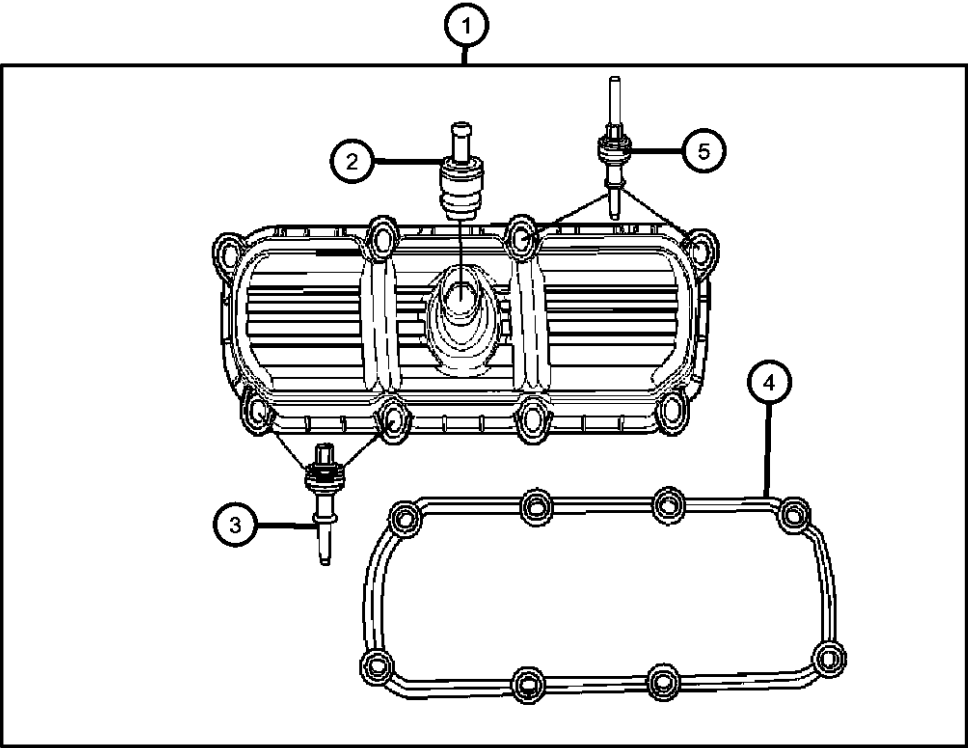
ITEM	PART NUMBER	QTY	LINE	SERIES	BODY	ENGINE	TRANS	TRIM	DESCRIPTION
------	-------------	-----	------	--------	------	--------	-------	------	-------------

NOTE:  
Sales Codes:  
[DBB] = All Manual Transmissions  
[DEH] = 6-Speed Manual NSG370 Transmission  
[DGQ] = 5-Speed Automatic 545RFE Transmission  
[DGV] = 4-Speed Automatic VLP 42RLE Transmission  
[DGO] = All Automatic Transmissions  
[DHE] = Manual Shift On The Fly NVG 241 Generation II Transfer Case  
[DHW] = 4:1 Rock-Trac H.D. Part Time 4WD NVG 241 Transfer Case  
[EGT] = 3.8L V-6 SMPI Engine  
[EG0] = All V-6 Engines  
[ENS] = 2.8L 4 Cylinder Turbo Diesel Next Generation  
[EN0] = All Turbo Diesel Engines  
[NAA] = Federal Emissions  
[NAE] = California Emissions  
[NAS] = 50 State Emissions  
[NA1] = Export Emissions  
[XEF] = Transfer Case Skid Plate Sheild

1									COVER, Cylinder Head, Right
	04648976AB	1	J, U			EGT			
		1	J, T, U			EGT			
2	04648973AB	1	J, T, U			EGT			VALVE, PCV
3									ISOLATOR, Cylinder Head Cover, Grommet And Bolt, [M6 X 1.0-6G] Cylinder Head Cover To Cylinder Head, Mounting
	04884764AA	4	J, U			EGT			
		4	J, T, U			EGT			Cylinder Head Cover To Cylinder Head, Mounting
4									GASKET, Cylinder Cover
	04648987AA	1	J, U			EGT			Right
		1	J, T, U			EGT			Right
5									ISOLATOR, Cylinder Head Cover, Grommet And Stud, [M6 X 1.0-6G] Cylinder Head Cover To Cylinder Head, Mounting
	04884763AA	4	J, U			EGT			
		4	J, T, U			EGT			Cylinder Head Cover To Cylinder Head, Mounting
6									COVER, Cylinder Head, Left
	04648980AB	1	J, U			EGT			
		1	J, T, U			EGT			
7									ISOLATOR, Cylinder Head Cover, Grommet And Bolt, [M6 X 1.0-6G] Cylinder Head Cover To Cylinder Head, Mounting
	04884764AA	5	J, U			EGT			

WRANGLER (JK)		BODY		ENGINE		TRANSMISSION	
SERIES	LINE						
P = PREMIUM	T = JEEP - 2WD	72 = SPORT UTILITY 2-DR		EGT = 3.8L V6 SMPI Engine		DEH = 6-Speed Manual NSG370	
S = SPORT	J = JEEP - 4WD	TYPE #2		ENS = 2.8L 4 Cyl TD Next		Transmission	
M = MEDIUM	U = JEEP - 4WD (RHD)	74 = SPORT UTILITY 4-DR		Generation Engine		DGV = 4-Spd. Automatic VLP 42RLE	
L = LOWLINE		TYPE #4				Trans	
						DGQ = 5-Spd Automatic 545RFE	
						Transmission	

Cylinder Head Covers 3.8L [EGT]  
Figure 009EGT-205

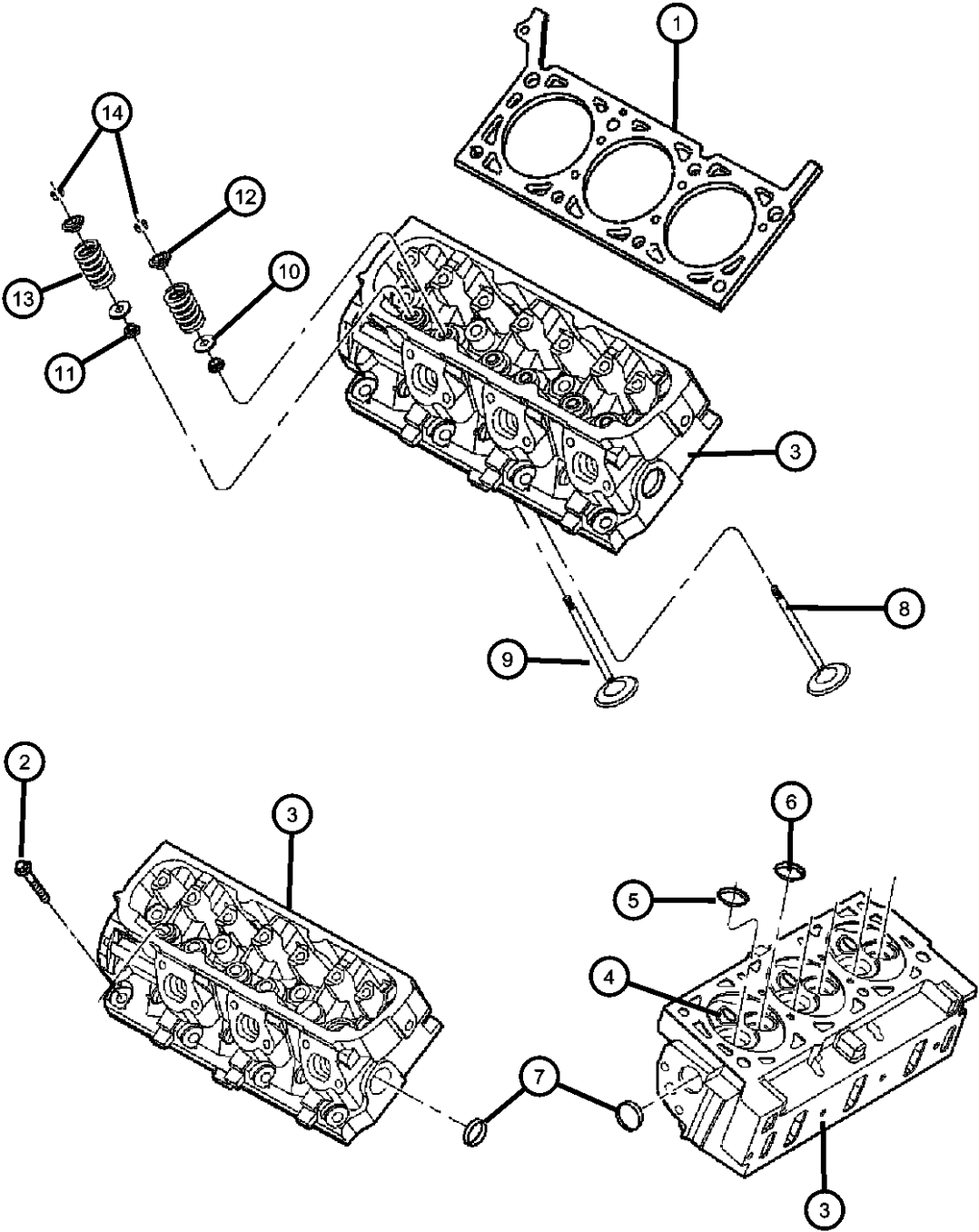


ITEM	PART NUMBER	QTY	LINE	SERIES	BODY	ENGINE	TRANS	TRIM	DESCRIPTION
8	04648987AA	5	J, T, U			EGT			, Mounting
		1	J, U			EGT			GASKET, Cylinder Cover
		1	J, T, U			EGT			Left
9	04884763AA	3	J, U			EGT			ISOLATOR, Cylinder Head Cover, Grommet And Stud, [M6 X 1.0-6G]
		3	J, T, U			EGT			Cylinder Head Cover To Cylinder Head, Mounting
		3	J, T, U			EGT			Cylinder Head Cover To Cylinder Head, Mounting
10	53013775AA	1	J, U			EGT			CAP, Oil Filler
		1	J, T, U			EGT			
11	68029299AA	1	J, U			EGT			O RING, Oil Filler Cap
		1	J, T, U			EGT			

WRANGLER (JK)		BODY		ENGINE		TRANSMISSION	
SERIES	LINE						
P = PREMIUM	T = JEEP - 2WD	72 = SPORT UTILITY 2-DR		EGT = 3.8L V6 SMPI Engine		DEH = 6-Speed Manual NSG370	
S = SPORT	J = JEEP - 4WD	TYPE #2		ENS = 2.8L 4 Cyl TD Next		Transmission	
M = MEDIUM	U = JEEP - 4WD (RHD)	74 = SPORT UTILITY 4-DR		Generation Engine		DGV = 4-Spd. Automatic VLP 42RLE	
L = LOWLINE		TYPE #4				Trans	
						DGQ = 5-Spd Automatic 545RFE	
						Transmission	

AR = use ase required - = Non illustrated part

Cylinder Heads 3.8L [EGT]  
Figure 009EGT-225



ITEM	PART NUMBER	QTY	LINE	SERIES	BODY	ENGINE	TRANS	TRIM	DESCRIPTION
------	-------------	-----	------	--------	------	--------	-------	------	-------------

NOTE:  
New Cylinder Heads Contain: Head, Freeze Plugs, Valve Seats And Guides Only.  
Sales Codes:  
[DBB] = All Manual Transmissions  
[DEH] = 6-Speed Manual NSG370 Transmission  
[DGQ] = 5-Speed Automatic 545RFE Transmission  
[DGV] = 4-Speed Automatic VLP 42RLE Transmission  
[DG0] = All Automatic Transmissions  
[DHE] = Manual Shift On The Fly NVG 241 Generation II Transfer Case  
[DHW] = 4:1 Rock-Trac H.D. Part Time 4WD NVG 241 Transfer Case  
[EGT] = 3.8L V-6 SMPI Engine  
[EG0] = All V-6 Engines  
[ENS] = 2.8L 4 Cylinder Turbo Diesel Next Generation  
[EN0] = All Turbo Diesel Engines  
[NAA] = Federal Emissions  
[NAE] = California Emissions  
[NAS] = 50 State Emissions  
[NA1] = Export Emissions  
[XEF] = Transfer Case Skid Plate Shield

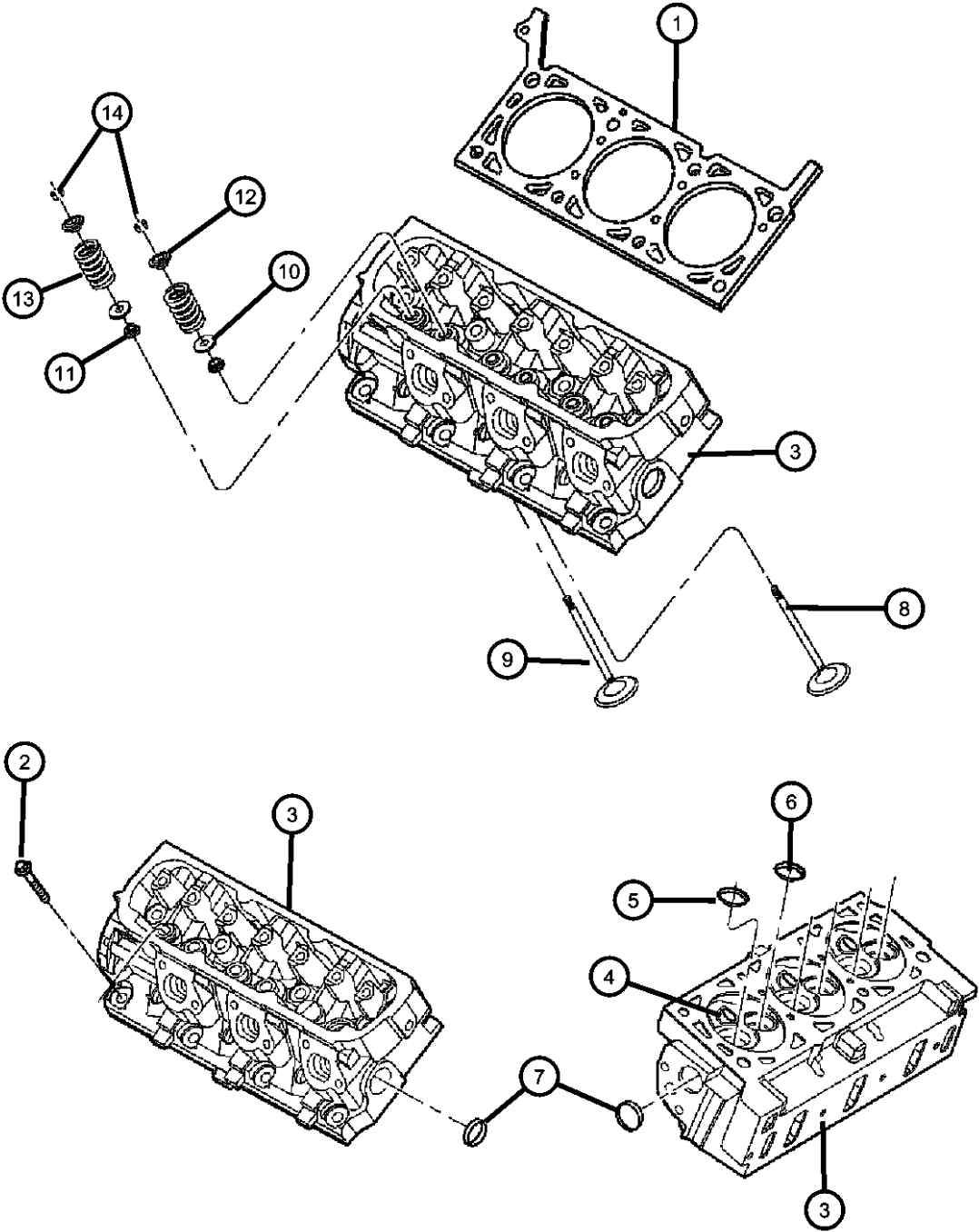
1									GASKET, Cylinder Head, Left
	04666033AA	1	J, T, U			EGT			Used For Vechiles Built Up To And Including 06-30-2007, Left
	04666033AB	1	J, U			EGT			Used For Vechiles Built On 07-01-2007 And After, Left
		1	J, T, U			EGT			Used For Vechiles Built On 07-01-2007 And After, Left
	04666034AB	1	J, U			EGT			Used For Vechiles Built On 07-01-2007 And After, Right
		1	T, U, J			EGT			Used For Vechiles Built On 07-01-2007 And After, Right
2									BOLT, Cylinder Head, [M11X1.50X122.50]
	06504060	16	J, U			EGT			Cylinder Head To Cylinder Block, Mounting, Right And Left
		16	J, T, U			EGT			Cylinder Head To Cylinder Block, Mounting, Right And Left
3									HEAD, Cylinder, See Note
	04666047AA	2	J, U			EGT			Right And Left
		2	J, T, U			EGT			Right And Left
4		2							GUIDE, Valve, Serviced With Cylinder Head, (NOT SERVICED)
5		2							SEAT, Intake Valve, Serviced With Cylinder Head, (NOT SERVICED)
6		2							SEAT, Exhaust Valve, Serviced With Cylinder Head, (NOT SERVICED)

WRANGLER (JK)				
SERIES	LINE	BODY	ENGINE	TRANSMISSION
P = PREMIUM	T = JEEP - 2WD	72 = SPORT UTILITY 2-DR	EGT = 3.8L V6 SMPI Engine	DEH = 6-Speed Manual NSG370
S = SPORT	J = JEEP - 4WD	TYPE #2	ENS = 2.8L 4 Cyl TD Next	Transmission
M = MEDIUM	U = JEEP - 4WD (RHD)	74 = SPORT UTILITY 4-DR	Generation Engine	DGV = 4-Spd. Automatic VLP 42RLE
L = LOWLINE		TYPE #4		Trans
				DGQ = 5-Spd Automatic 545RFE
				Transmission

AR = use ase required - = Non illustrated part



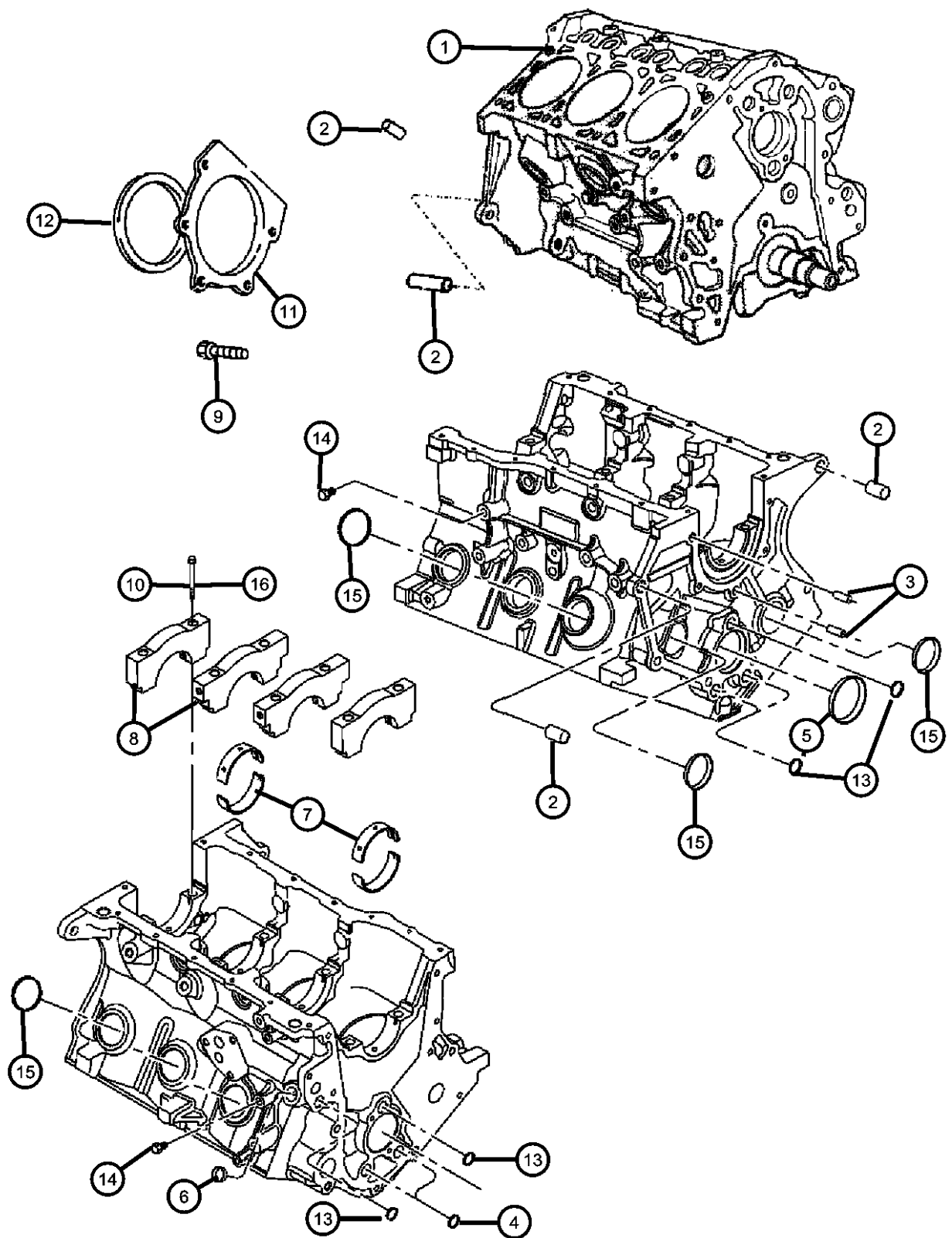
Cylinder Heads 3.8L [EGT]  
Figure 009EGT-225



ITEM	PART NUMBER	QTY	LINE	SERIES	BODY	ENGINE	TRANS	TRIM	DESCRIPTION
7	04556020AB	4	J, U			EGT			PLUG, Core
		4	J, T, U			EGT			
8	04781029AB	6	J, U			EGT			VALVE, Exhaust, Standard
		6	J, T, U			EGT			
9	04781025AA	6	J, U			EGT			VALVE, Intake, Standard
		6	J, T, U			EGT			
10	04781509AA	12	J, U			EGT			SEAT, Valve Spring
		12	J, T, U			EGT			
11	04781072AB	12	J, U			EGT			SEAL, Valve Guide
		12	J, T, U			EGT			
12	04781090AA	12	J, U			EGT			RETAINER, Valve Spring
		12	J, T, U			EGT			
13	04781588AC	12	J, U			EGT			SPRING, Valve
		12	J, T			EGT			
14	04781030AA	24	J, U			EGT			LOCK, Valve Spring Retainer
		24	J, T, U			EGT			

WRANGLER (JK)		BODY		ENGINE		TRANSMISSION	
SERIES	LINE						
P = PREMIUM	T = JEEP - 2WD	72 = SPORT UTILITY 2-DR		EGT = 3.8L V6 SMPI Engine		DEH = 6-Speed Manual NSG370	
S = SPORT	J = JEEP - 4WD	TYPE #2		ENS = 2.8L 4 Cyl TD Next		Transmission	
M = MEDIUM	U = JEEP - 4WD (RHD)	74 = SPORT UTILITY 4-DR		Generation Engine		DGV = 4-Spd. Automatic VLP 42RLE	
L = LOWLINE		TYPE #4				Trans	
						DGQ = 5-Spd Automatic 545RFE	
						Transmission	

Engine Cylinder Block And Hardware 3.8L [EGT]  
Figure 009EGT-305



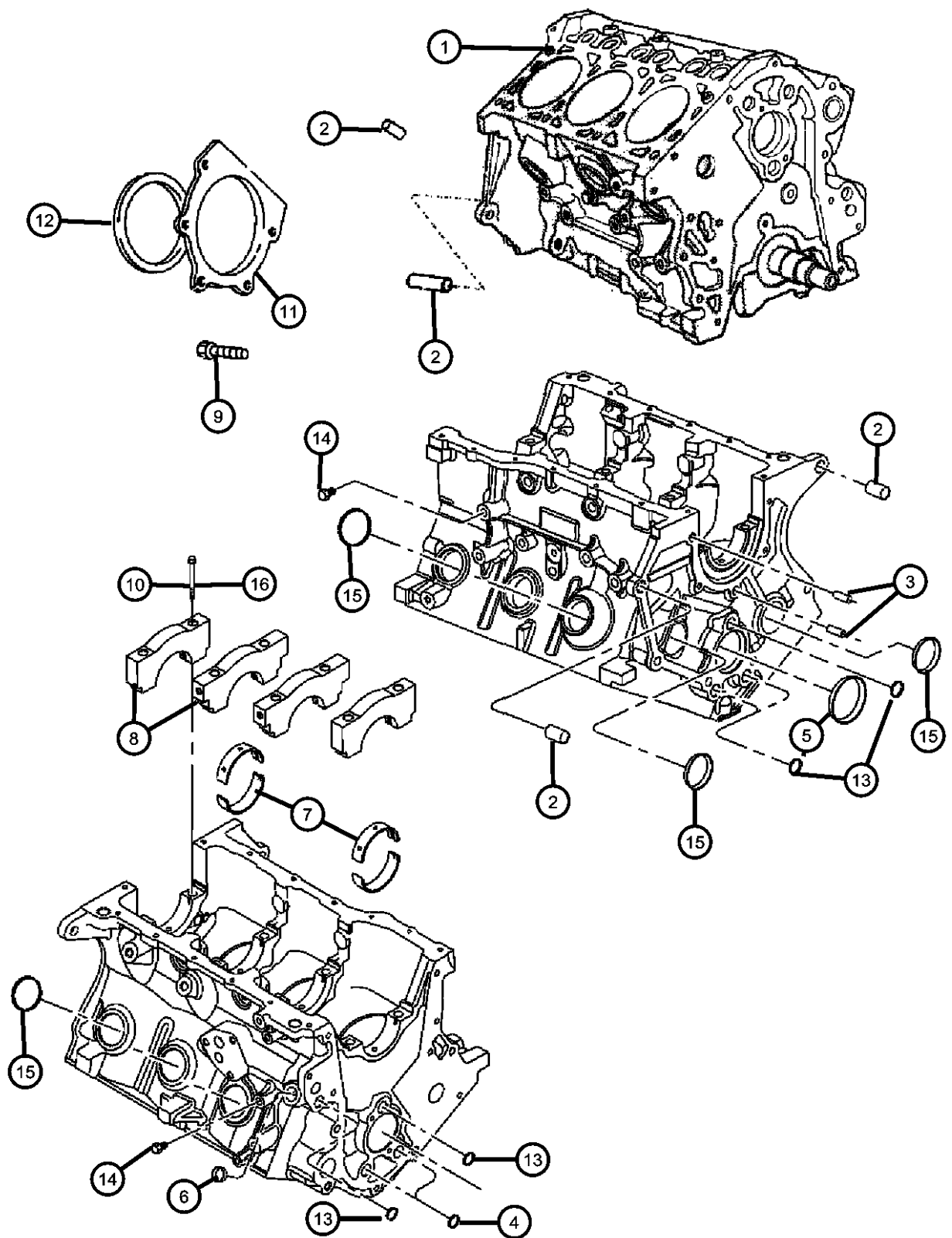
ITEM	PART NUMBER	QTY	LINE	SERIES	BODY	ENGINE	TRANS	TRIM	DESCRIPTION
------	-------------	-----	------	--------	------	--------	-------	------	-------------

NOTE:  
Small Bore Lifters/Tappets: 3.8L JK Vechiles With An Engine Build Of 7-23-07 And After, Have Small Bore Lifters/Tappets. This Is Identified With A Rear Retainer Is A New One Piece Design. Gasket Is Not Required.  
Sales Codes:  
[DBB] = All Manual Transmissions  
[DEH] = 6-Speed Manual NSG370 Transmission  
[DGQ] = 5-Speed Automatic 545RFE Transmission  
[DGV] = 4-Speed Automatic VLP 42RLE Transmission  
[DG0] = All Automatic Transmissions  
[DHE] = Manual Shift On The Fly NVG 241 Generation II Transfer Case  
[DHW] = 4:1 Rock-Trac H.D. Part Time 4WD NVG 241 Transfer Case  
[EGT] = 3.8L V-6 SMPI Engine  
[EG0] = All V-6 Engines  
[ENS] = 2.8L 4 Cylinder Turbo Diesel Next Generation  
[EN0] = All Turbo Diesel Engines  
[NAA] = Federal Emissions  
[NAE] = California Emissions  
[NAS] = 50 State Emissions  
[NA1] = Export Emissions  
[XEF] = Transfer Case Skid Plate Sheild

1	68036638AA	1	J, U			EGT	DEH		ENGINE, Short Block, See Note
		1	J, T, U			EGT	DEH		Small Tappet Bore
		1	J, U			EGT	DGV		Small Tappet Bore
		1	J, T, U			EGT	DGV		Small Tappet Bore
2	04448856	4	J, U			EGT			DOWEL PIN
		4	J, T, U			EGT			Cylinder Head To Cylinder Block, Mounting
	05240849	2	J, U			EGT			Cylinder Head To Cylinder Block, Mounting
		2	J, T, U			EGT			Transmission To Cylinder Block, Mounting
3		2							Transmission To Cylinder Block, Mounting
4	04556222	2	J, U			EGT			PIN, Dowel, Serviced In Short Block, (NOT SERVICED), PLUG, Cylinder Block Oil Hole, [.89MM]
		2	J, T, U			EGT			
5	04694337	1	J, U			EGT			PLUG, Camshaft
		1	J, T, U			EGT			

WRANGLER (JK)									
SERIES	LINE	BODY	ENGINE	TRANSMISSION					
P = PREMIUM	T = JEEP - 2WD	72 = SPORT UTILITY 2-DR	EGT = 3.8L V6 SMPI Engine	DEH = 6-Speed Manual NSG370					
S = SPORT	J = JEEP - 4WD	TYPE #2	ENS = 2.8L 4 Cyl TD Next	Transmission					
M = MEDIUM	U = JEEP - 4WD (RHD)	74 = SPORT UTILITY 4-DR	Generation Engine	DGV = 4-Spd. Automatic VLP 42RLE					
L = LOWLINE		TYPE #4		Trans					
				DGQ = 5-Spd Automatic 545RFE					
				Transmission					

Engine Cylinder Block And Hardware 3.8L [EGT]  
Figure 009EGT-305



ITEM	PART NUMBER	QTY	LINE	SERIES	BODY	ENGINE	TRANS	TRIM	DESCRIPTION
6									PLUG, Hex Socket, 3/8-18NPTx.475
	06034331	1	J, U			EGT			Cylinder Block Oil Gallery
		1	J, T, U			EGT			Cylinder Block Oil Gallery
7		1							BEARING, Crankshaft, See Crankshaft ILL., (NOT SERVICED),
8		1							MAIN CAP, Serviced With New Shortblock, (NOT SERVICED)
9	06104004AA	5	J, T, U			EGT			BOLT, Rear Oil Seal Retainer To Cylinder Block, Mounting
10									BOLT, Main Bearing Cap, [M11X1.50X90.00]
	06503201	8	J, U			EGT			
		8	J, T, U			EGT			
11									RETAINER, Crankshaft Rear Oil Seal, See Note
	68031388AA	1	J, U			EGT			With Sleeve
		1	J, T, U			EGT			With Sleeve
12		1							SEAL, Rear Main Crankshaft, Serviced With Rear Retainer Only Item 11, (NOT SERVICED),
13									PLUG, Core
	04556018AB	5	J, U			EGT			Cylinder Block Oil Gallery 5/8
		5	J, T, U			EGT			Cylinder Block Oil Gallery 5/8
14									PLUG, Pipe, .250-18X.413
	06036307AA	2	J, U			EGT			Cylinder Block Coolant Drain
		2	J, T, U			EGT			Cylinder Block Coolant Drain
15									PLUG, Core, 1.625 Diameter
	04556022	8	J, U			EGT			
		8	J, T, U			EGT			
16									BOLT, Bearing Cap
	06506167AA	4	J, U			EGT			Main Bearing Cap To Cylinder Block Cross, Mounting
		4	J, T, U			EGT			Main Bearing Cap To Cylinder Block Cross, Mounting

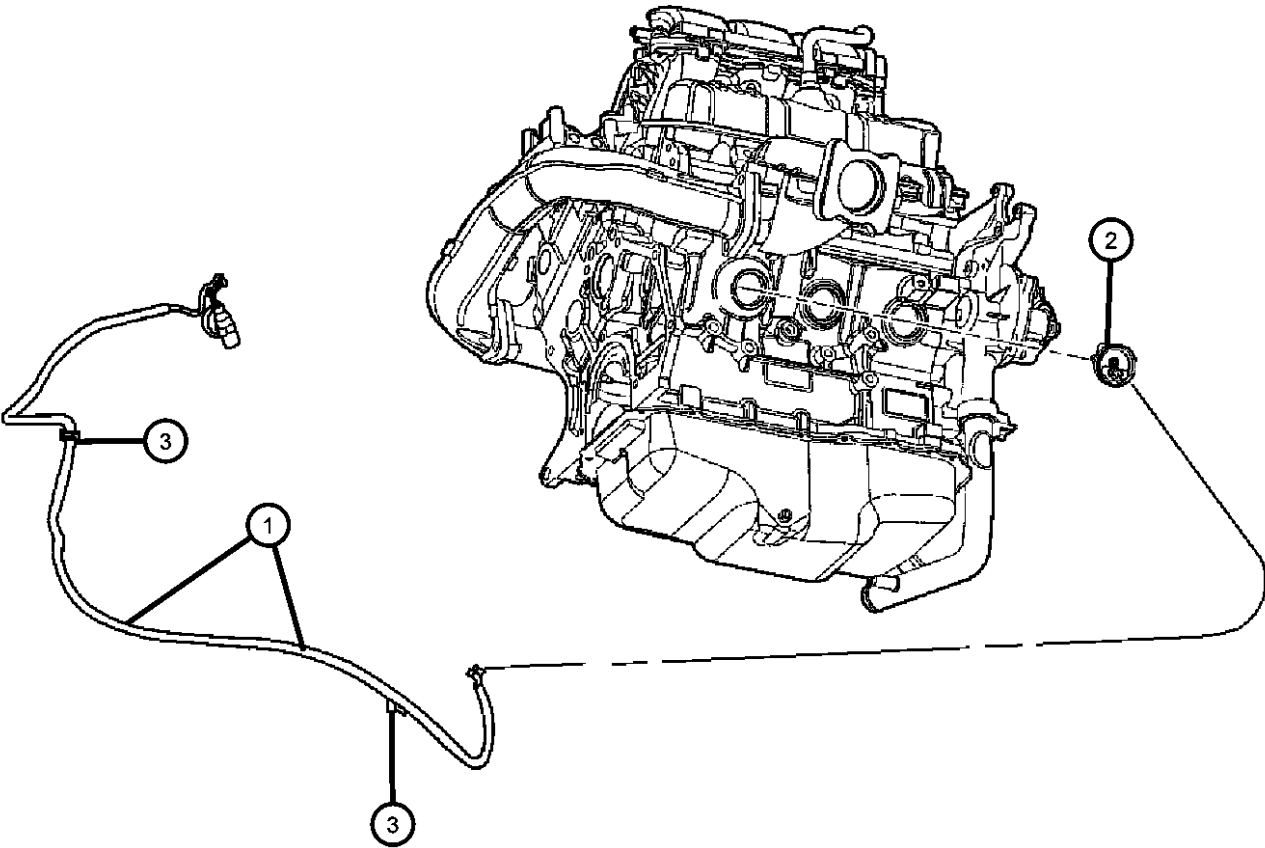
WRANGLER (JK)		BODY		ENGINE	TRANSMISSION
SERIES	LINE				
P = PREMIUM	T = JEEP - 2WD	72 = SPORT UTILITY 2-DR		EGT = 3.8L V6 SMPI Engine	DEH = 6-Speed Manual NSG370
S = SPORT	J = JEEP - 4WD	TYPE #2		ENS = 2.8L 4 Cyl TD Next	Transmission
M = MEDIUM	U = JEEP - 4WD (RHD)	74 = SPORT UTILITY 4-DR		Generation Engine	DGV = 4-Spd. Automatic VLP 42RLE
L = LOWLINE		TYPE #4			Trans
					DGQ = 5-Spd Automatic 545RFE
					Transmission

AR = use ase required - = Non illustrated part

Engine Cylinder Block Heater 3.8L [EGT]  
Figure 009EGT-325

ITEM	PART NUMBER	QTY	LINE	SERIES	BODY	ENGINE	TRANS	TRIM	DESCRIPTION
------	----------------	-----	------	--------	------	--------	-------	------	-------------

NOTE:  
Sales Codes:  
[DBB] = All Manual Transmissions  
[DEH] = 6-Speed Manual NSG370 Transmission  
[DGQ] = 5-Speed Automatic 545RFE Transmission  
[DGV] = 4-Speed Automatic VLP 42RLE Transmission  
[DGO] = All Automatic Transmissions  
[DHE] = Manual Shift On The Fly NVG 241 Generation II Transfer Case  
[DHW] = 4:1 Rock-Trac H.D. Part Time 4WD NVG 241 Transfer Case  
[EGT] = 3.8L V-6 SMPI Engine  
[EGO] = All V-6 Engines  
[ENS] = 2.8L 4 Cylinder Turbo Diesel Next Generation  
[ENO] = All Turbo Diesel Engines  
[NAA] = Federal Emissions  
[NAE] = California Emissions  
[NAS] = 50 State Emissions  
[NA1] = Export Emissions  
[XEF] = Transfer Case Skid Plate Sheild



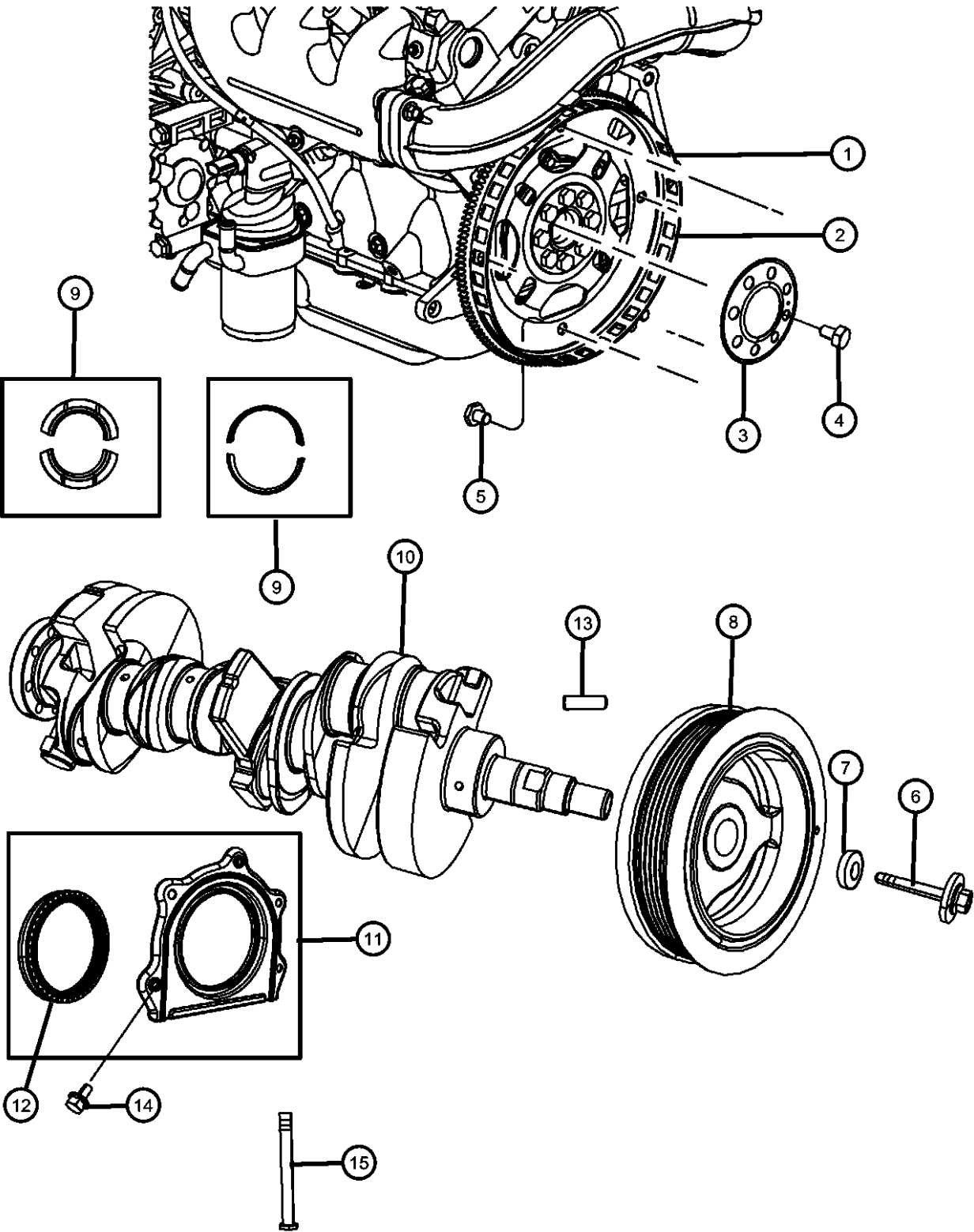
1									CORD, Engine Block Heater
	04801618AA	1	J, U			EGO			
		1	J, T, U			EGO			
2									HEATER, Engine Block
	05149107AA	1	J, U			EGT			
		1	J, T, U			EGT			
3		1							CLIP, Serviced With Item 1 Cord, (NOT SERVICED)

WRANGLER (JK)				
SERIES	LINE	BODY	ENGINE	TRANSMISSION
P = PREMIUM	T = JEEP - 2WD	72 = SPORT UTILITY 2-DR	EGT = 3.8L V6 SMPI Engine	DEH = 6-Speed Manual NSG370
S = SPORT	J = JEEP - 4WD	TYPE #2	ENS = 2.8L 4 Cyl TD Next	Transmission
M = MEDIUM	U = JEEP - 4WD (RHD)	74 = SPORT UTILITY 4-DR	Generation Engine	DGV = 4-Spd. Automatic VLP 42RLE
L = LOWLINE		TYPE #4		Trans
				DGQ = 5-Spd Automatic 545RFE
				Transmission

AR = use ase required - = Non illustrated part

2008 JK

Crankshaft, Crankshaft Bearings, Damper Flexplate And Flywheel 3.8L [EGT]  
Figure 009EGT-405



ITEM	PART NUMBER	QTY	LINE	SERIES	BODY	ENGINE	TRANS	TRIM	DESCRIPTION
------	-------------	-----	------	--------	------	--------	-------	------	-------------

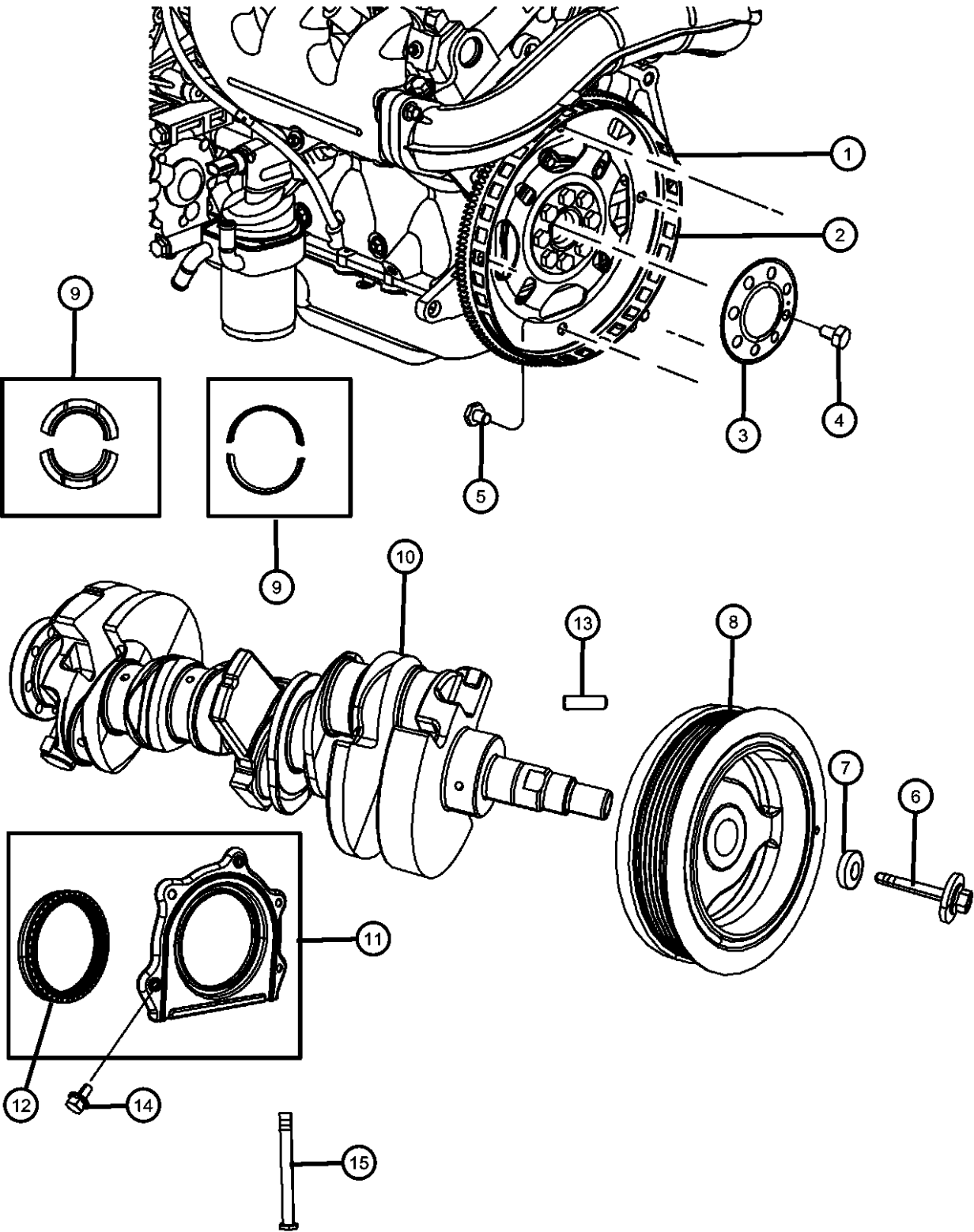
NOTE:  
Sales Codes:  
[DBB] = All Manual Transmissions  
[DEH] = 6-Speed Manual NSG370 Transmission  
[DGQ] = 5-Speed Automatic 545RFE Transmission  
[DGV] = 4-Speed Automatic VLP 42RLE Transmission  
[DG0] = All Automatic Transmissions  
[DHE] = Manual Shift On The Fly NVG 241 Generation II Transfer Case  
[DHW] = 4:1 Rock-Trac H.D. Part Time 4WD NVG 241 Transfer Case  
[EGT] = 3.8L V-6 SMPI Engine  
[EG0] = All V-6 Engines  
[ENS] = 2.8L 4 Cylinder Turbo Diesel Next Generation  
[EN0] = All Turbo Diesel Engines  
[NAA] = Federal Emissions  
[NAE] = California Emissions  
[NAS] = 50 State Emissions  
[NA1] = Export Emissions  
[XEF] = Transfer Case Skid Plate Shield

1									FLEXPLATE
	04736299AA	1	J, U			EGT	DG0		
		1	J, T, U			EGT	DG0		
2									FLYWHEEL
	04666102AA	1	J, U			EGT	DEH		
		1	J, T, U			EGT	DEH		
3									PLATE, Flexplate or Flywheel Backing
	04471933	1	J, U				DG0		
		1	J, T, U				DG0		
4									BOLT, Hex Head Lock, M10X1.00X18.00
	06503465	8	J, U				DG0		Flexplate To Crankshaft, Mounting
		8	J, T, U				DG0		Flexplate To Crankshaft, Mounting
5									BOLT, Hex Head Lock, M10X1.50X13.20
	06504383	4	J, U			EG0	DG0		Flexplate To Torque Converter, Mounting
		4	J, T, U			EG0	DG0		Flexplate To Torque Converter, Mounting
6									BOLT, [M10x1.50x61.00]
	06502976	1	J, U			EGT			Damper To Crankshaft, Mounting
		1	J, T, U			EGT			Damper To Crankshaft, Mounting

WRANGLER (JK)		BODY		ENGINE		TRANSMISSION	
SERIES	LINE	TYPE #2		Generation Engine		Trans	
P = PREMIUM	T = JEEP - 2WD	72 = SPORT UTILITY 2-DR		EGT = 3.8L V6 SMPI Engine		DEH = 6-Speed Manual NSG370	
S = SPORT	J = JEEP - 4WD	74 = SPORT UTILITY 4-DR		ENS = 2.8L 4 Cyl TD Next		Transmission	
M = MEDIUM	U = JEEP - 4WD (RHD)	TYPE #4				DGV = 4-Spd. Automatic VLP 42RLE	
L = LOWLINE						Trans	
						DGQ = 5-Spd Automatic 545RFE	
						Transmission	

AR = use ase required - = Non illustrated part

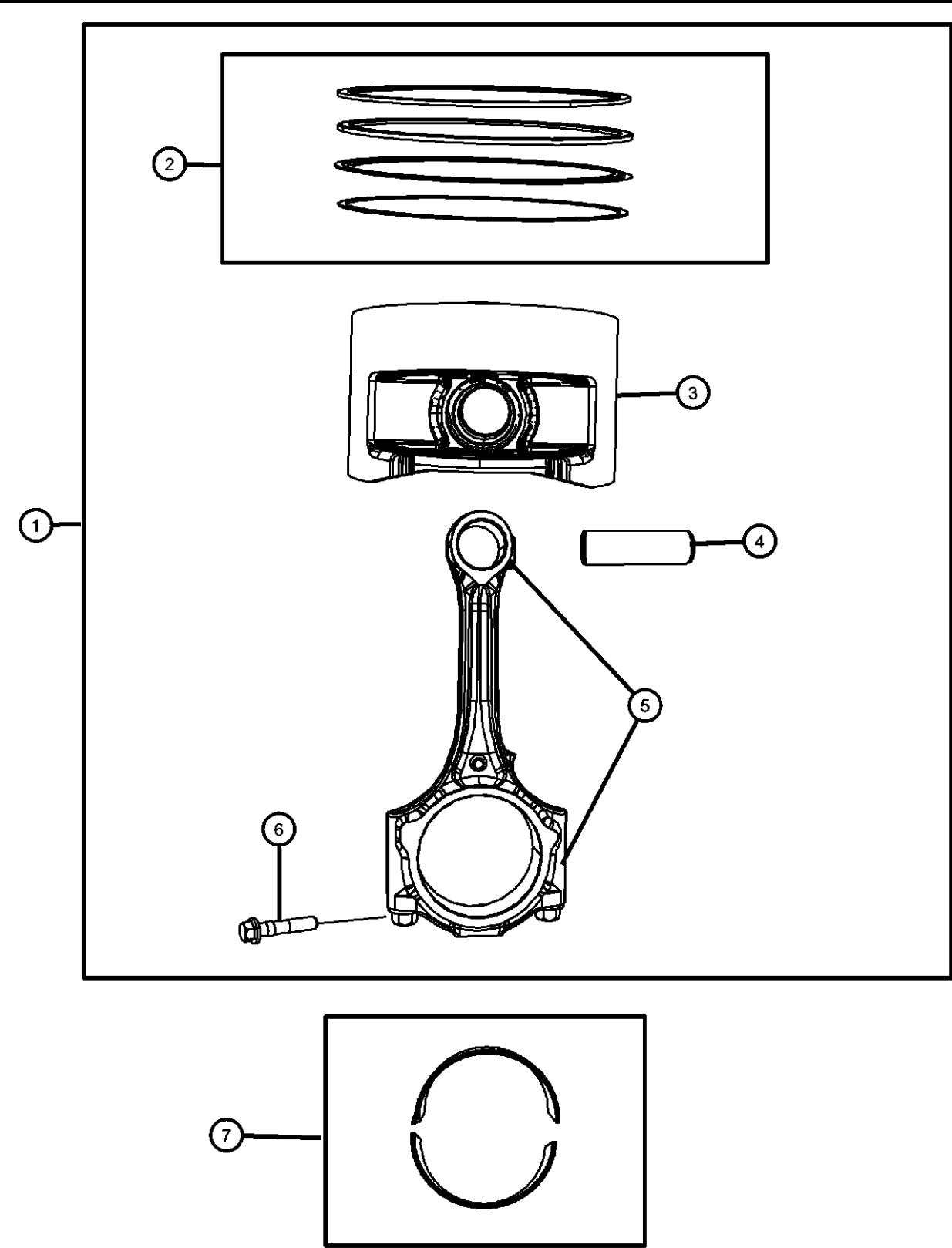
Crankshaft, Crankshaft Bearings, Damper Flexplate And Flywheel 3.8L [EGT]  
Figure 009EGT-405



ITEM	PART NUMBER	QTY	LINE	SERIES	BODY	ENGINE	TRANS	TRIM	DESCRIPTION
7	06504776	1	J, U			EGT			WASHER
		1	J, T, U			EGT			
8	04666099AB	1	J, U			EGT			DAMPER, Crankshaft
		1	J, T, U			EGT			
9	05175980AA	3	J, U			EGT			BEARING KIT, Crankshaft, Standard
		3	J, T, U			EGT			Kit Contains One Upper And Lower Bearing Only
	05175981AA	1	J, U			EGT			Kit Contains One Upper And Lower Bearing Only
		1	J, T, U			EGT			Main Thrust
10	04781071AB	1	J, U			EGT			CRANKSHAFT
		1	J, T, U			EGT			
11	68031388AA	1	J, U			EGT			RETAINER, Crankshaft Rear Oil Seal
		1	J, T, U			EGT			
12		1							SEAL, Crankshaft Oil, Rear, Serviced In Item 10 Retainer Package., (NOT SERVICED)
13	04448557	1	J, U			EGT			DOWEL PIN
		1	J, T, U			EGT			Crankshaft Sprocket
14	06104004AA	5	J, U			EGT			Crankshaft Sprocket
		5	J, T, U			EGT			BOLT, [M6x1.0x12.0]
15	06503201	8	J, U			EGT			Rear Seal Retainer To Cylinder Block, Mounting
		8	J, T, U			EGT			Rear Seal Retainer To Cylinder Block, Mounting

WRANGLER (JK)		BODY		ENGINE		TRANSMISSION	
SERIES	LINE						
P = PREMIUM	T = JEEP - 2WD	72 = SPORT UTILITY 2-DR		EGT = 3.8L V6 SMPI Engine		DEH = 6-Speed Manual NSG370	
S = SPORT	J = JEEP - 4WD	TYPE #2		ENS = 2.8L 4 Cyl TD Next		Transmission	
M = MEDIUM	U = JEEP - 4WD (RHD)	74 = SPORT UTILITY 4-DR		Generation Engine		DGV = 4-Spd. Automatic VLP 42RLE	
L = LOWLINE		TYPE #4				Trans	
						DGQ = 5-Spd Automatic 545RFE	
						Transmission	

Pistons, Piston Rings, Connecting Rods And Connecting Rod Bearings 3.8L [EGT]  
Figure 009EGT-425



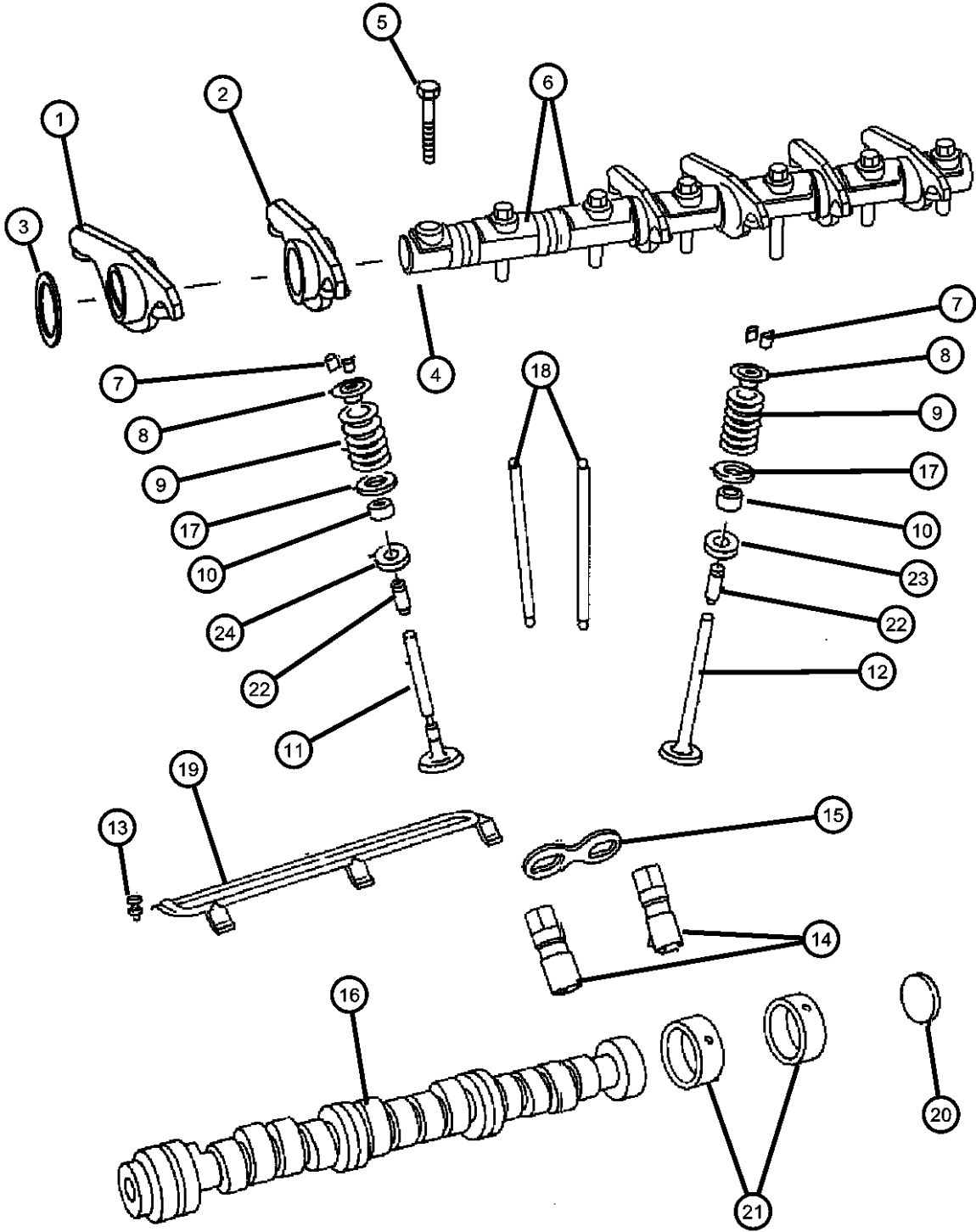
ITEM	PART NUMBER	QTY	LINE	SERIES	BODY	ENGINE	TRANS	TRIM	DESCRIPTION
------	-------------	-----	------	--------	------	--------	-------	------	-------------

NOTE:  
Sales Codes:  
[DBB] = All Manual Transmissions  
[DEH] = 6-Speed Manual NSG370 Transmission  
[DGQ] = 5-Speed Automatic 545RFE Transmission  
[DGV] = 4-Speed Automatic VLP 42RLE Transmission  
[DGO] = All Automatic Transmissions  
[DHE] = Manual Shift On The Fly NVG 241 Generation II Transfer Case  
[DHW] = 4:1 Rock-Trac H.D. Part Time 4WD NVG 241 Transfer Case  
[EGT] = 3.8L V-6 SMPI Engine  
[EG0] = All V-6 Engines  
[ENS] = 2.8L 4 Cylinder Turbo Diesel Next Generation  
[EN0] = All Turbo Diesel Engines  
[NAA] = Federal Emissions  
[NAE] = California Emissions  
[NAS] = 50 State Emissions  
[NA1] = Export Emissions  
[XEF] = Transfer Case Skid Plate Shield

1									PISTON PIN AND ROD
	04666129AA	6	J, U			EGT			
		6	J, T, U			EGT			
2									RING KIT, Piston, Standard
	68001386AA	1	J, U			EGT			Complete Engine Set
		1	J, T, U			EGT			Complete Engine Set
3		1							PISTON, ENGINE, Serviced In Item 1, (NOT SERVICED),
4		1							PIN, Piston, Serviced In Item 1, (NOT SERVICED)
5		1							ROD, Connecting, Serviced In Item 1, (NOT SERVICED)
6									BOLT, Connecting Rod, [M9X1.0X45.00]
	06508364AA	12	J, U			EGT			
		12	J, T, U			EGT			
7									BEARING PACKAGE, Connecting Rod, Standard
	05161294AA	12	J, U			EGT			One Package contains Upper And Lower bearing Only
		12	J, T, U			EGT			

WRANGLER (JK)		BODY		ENGINE		TRANSMISSION	
SERIES	LINE						
P = PREMIUM	T = JEEP - 2WD	72 = SPORT UTILITY 2-DR		EGT = 3.8L V6 SMPI Engine		DEH = 6-Speed Manual NSG370	
S = SPORT	J = JEEP - 4WD	TYPE #2		ENS = 2.8L 4 Cyl TD Next		Transmission	
M = MEDIUM	U = JEEP - 4WD (RHD)	74 = SPORT UTILITY 4-DR		Generation Engine		DGV = 4-Spd. Automatic VLP 42RLE	
L = LOWLINE		TYPE #4				Trans	
						DGQ = 5-Spd Automatic 545RFE	
						Transmission	

Camshafts And Valvetrain 3.8L [EGT]  
Figure 009EGT-505



ITEM	PART NUMBER	QTY	LINE	SERIES	BODY	ENGINE	TRANS	TRIM	DESCRIPTION
------	-------------	-----	------	--------	------	--------	-------	------	-------------

NOTE:  
Small Bore Lifters/Tappets: 3.8L JK Vehicles With An Engine Build Of 7-23-07 And After, Have Small Bore Lifters/Tappets. This Is Identified With A Sales Codes:  
[DBB] = All Manual Transmissions  
[DEH] = 6-Speed Manual NSG370 Transmission  
[DGQ] = 5-Speed Automatic 545RFE Transmission  
[DGV] = 4-Speed Automatic VLP 42RLE Transmission  
[DG0] = All Automatic Transmissions  
[DHE] = Manual Shift On The Fly NVG 241 Generation II Transfer Case  
[DHW] = 4:1 Rock-Trac H.D. Part Time 4WD NVG 241 Transfer Case  
[EGT] = 3.8L V-6 SMPI Engine  
[EG0] = All V-6 Engines  
[ENS] = 2.8L 4 Cylinder Turbo Diesel Next Generation  
[EN0] = All Turbo Diesel Engines  
[NAA] = Federal Emissions  
[NAE] = California Emissions  
[NAS] = 50 State Emissions  
[NA1] = Export Emissions  
[XEF] = Transfer Case Skid Plate Shield

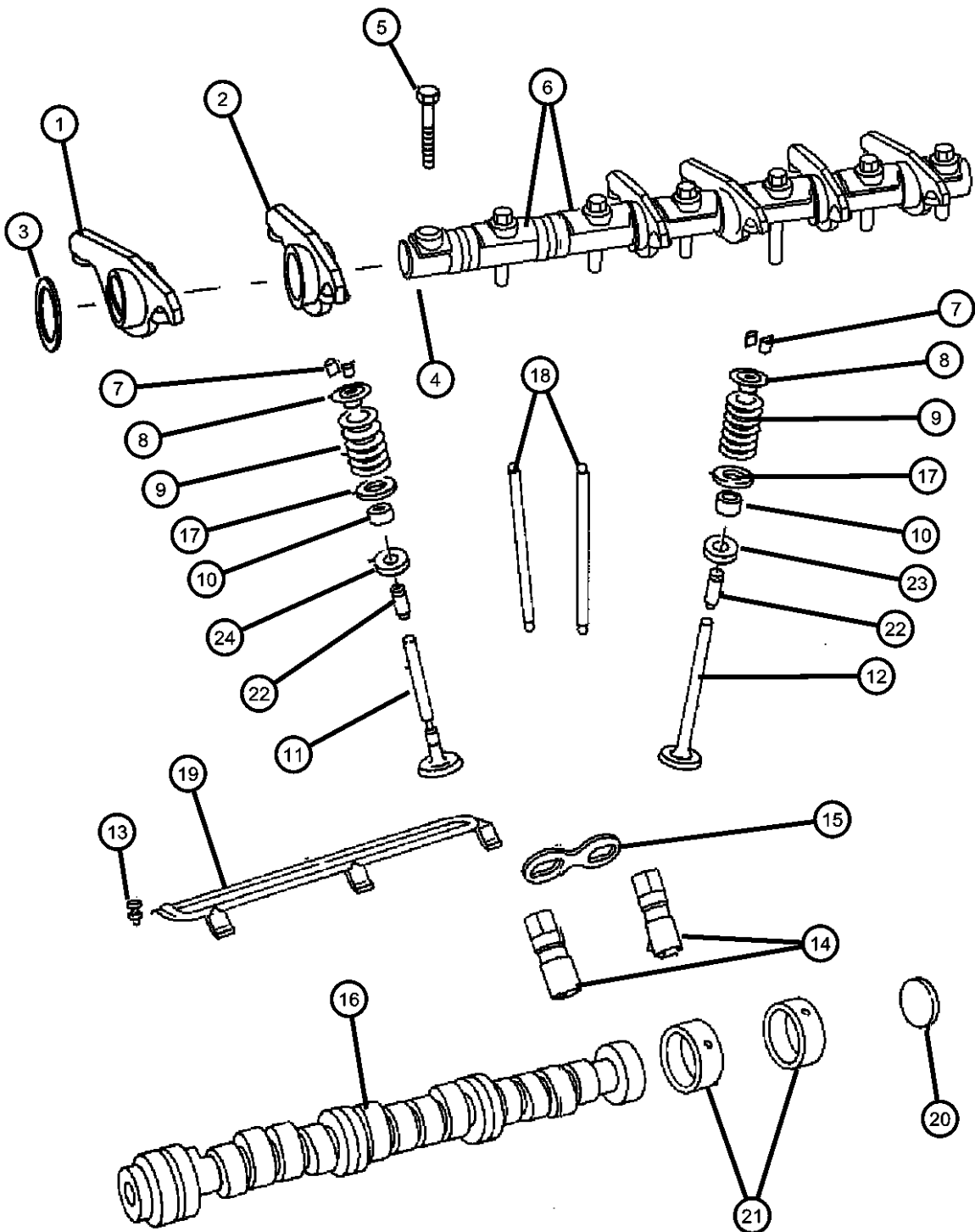
1									ROCKER ARM, Exhaust
	04781182AA	6	J, U			EGT			
		6	J, T, U			EGT			
2									ROCKER ARM, Intake
	04781183AA	6	J, U			EGT			
		6	J, T, U			EGT			
3									THRUST WASHER, Rocker Arm
	04781523AA	12	J, U			EGT			
		12	J, T, U			EGT			
4									SHAFT, Rocker Arm
	04781184AA	2	J, U			EGT			
		2	J, T, U			EGT			
5									BOLT, Header Point Reduced Body, M8X1.25X41.00
	06506521AA	12	J, U			EGT			
		12	J, T, U			EGT			
6									RETAINER, Valve Rocker Shaft
	04781185AA	6	J, U			EGT			
		6	J, T, U			EGT			
	04781186AA	4	J, U			EGT			

WRANGLER (JK)		BODY		ENGINE	TRANSMISSION
SERIES	LINE				
P = PREMIUM	T = JEEP - 2WD	72 = SPORT UTILITY 2-DR		EGT = 3.8L V6 SMPI Engine	DEH = 6-Speed Manual NSG370
S = SPORT	J = JEEP - 4WD	TYPE #2		ENS = 2.8L 4 Cyl TD Next	Transmission
M = MEDIUM	U = JEEP - 4WD (RHD)	74 = SPORT UTILITY 4-DR		Generation Engine	DGV = 4-Spd. Automatic VLP 42RLE
L = LOWLINE		TYPE #4			Trans
					DGQ = 5-Spd Automatic 545RFE
					Transmission

AR = use ase required - = Non illustrated part



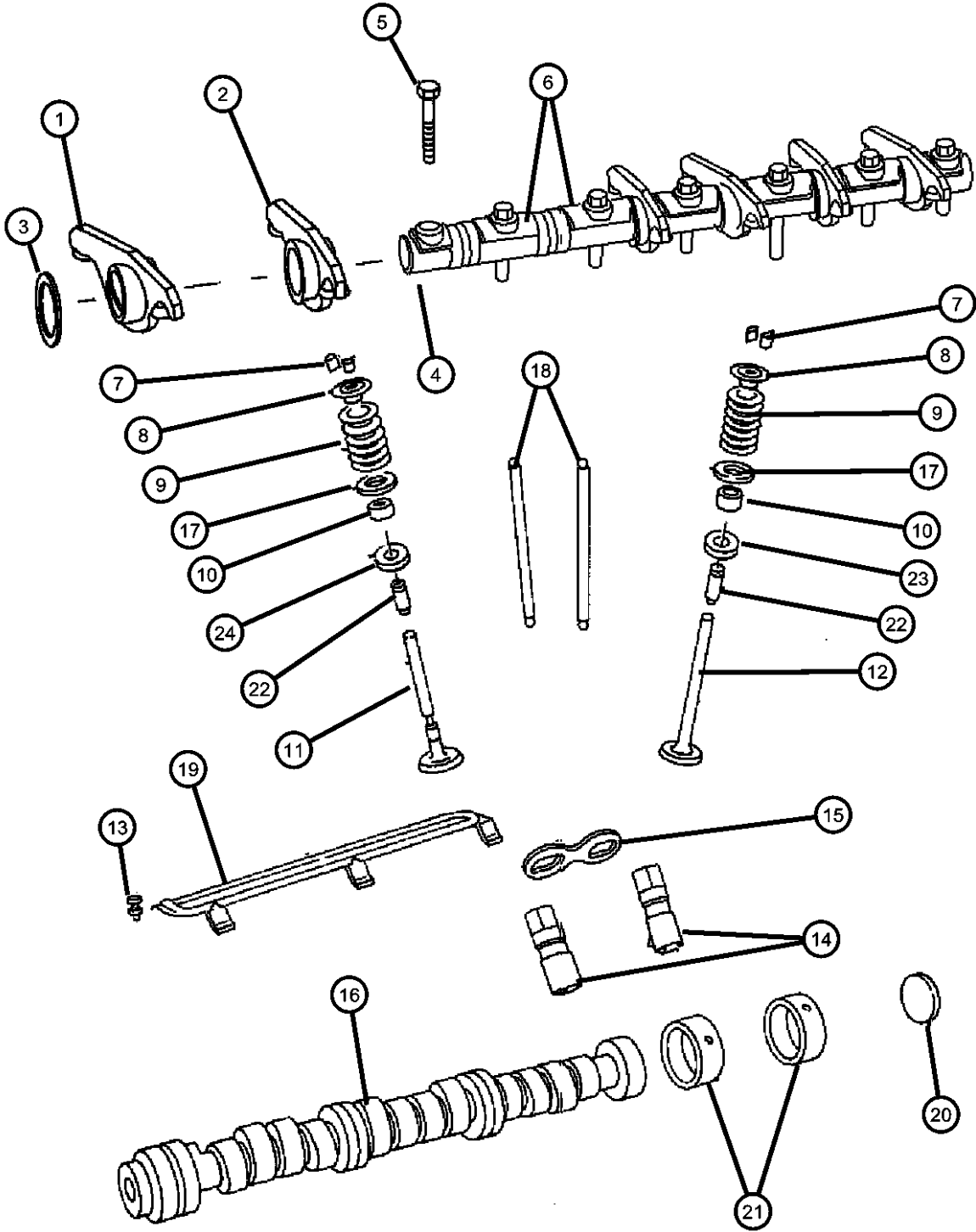
Camshafts And Valvetrain 3.8L [EGT]  
Figure 009EGT-505



ITEM	PART NUMBER	QTY	LINE	SERIES	BODY	ENGINE	TRANS	TRIM	DESCRIPTION
7	04781187AA	4	J, T, U			EGT			Rocker Shaft Cylinder
		4	J, U			EGT			Rocker Shaft End
		4	J, T, U			EGT			Rocker Shaft End
									LOCK, Valve Spring Retainer
	04781030AA	24	J, U			EGT			
		24	J, T, U			EGT			
8	04781090AA	12	J, U			EGT			RETAINER, Valve Spring
		12	J, T, U			EGT			
9	04781588AC	12	J, U			EGT			SPRING, Valve
		12	J, T			EGT			
10	04781072AB	12	J, U			EGT			SEAL, Valve Guide
		12	J, T, U			EGT			
11	04781025AA	6	J, U			EGT			VALVE, Intake, Standard
		6	J, T, U			EGT			
12	04781029AB	6	J, U			EGT			VALVE, Exhaust, Standard
		6	J, T, U			EGT			
13	06102001	3	J, U			EGT			BOLT AND WASHER, M6x12
		3	J, T, U			EGT			Tappet Yoke Retainer To Cylinder Block, Mounting
14	04621938								Tappet Yoke Retainer To Cylinder Block, Mounting
									TAPPET, Valve, See Note
		12	J, U			EGT			Large Bore
		12	J, T, U			EGT			Large Bore
15	04892465AA	12	J, U			EGT			Small Bore
		12	J, T, U			EGT			Small Bore
									YOKE, Tappet Aligning, See Note
		6	J, U			EGT			Large Bore
	04448078	6	J, T, U			EGT			Large Bore

WRANGLER (JK)		BODY		ENGINE	TRANSMISSION
SERIES	LINE	TYPE #2		EGT = 3.8L V6 SMPI Engine	DEH = 6-Speed Manual NSG370
P = PREMIUM	T = JEEP - 2WD	72 = SPORT UTILITY 2-DR		ENS = 2.8L 4 Cyl TD Next	Transmission
S = SPORT	J = JEEP - 4WD	74 = SPORT UTILITY 4-DR		Generation Engine	DGV = 4-Spd. Automatic VLP 42RLE
M = MEDIUM	U = JEEP - 4WD (RHD)	TYPE #4			Trans
L = LOWLINE					DGQ = 5-Spd Automatic 545RFE
					Transmission

Camshafts And Valvetrain 3.8L [EGT]  
Figure 009EGT-505

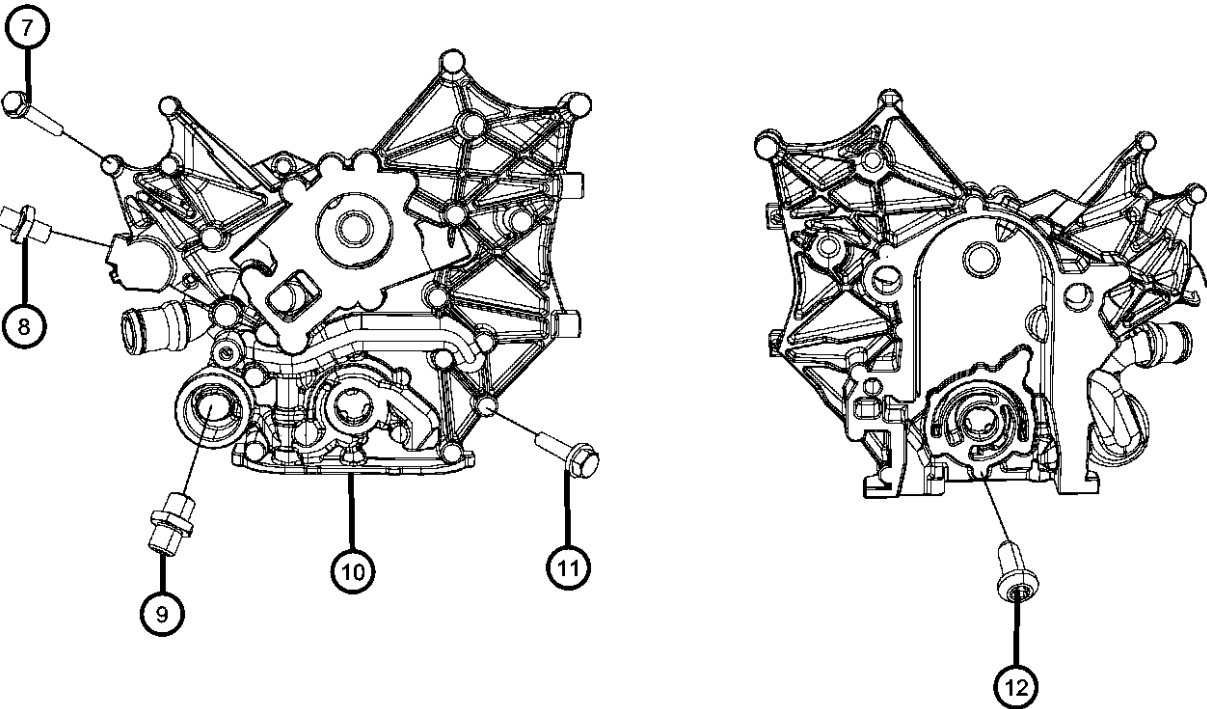
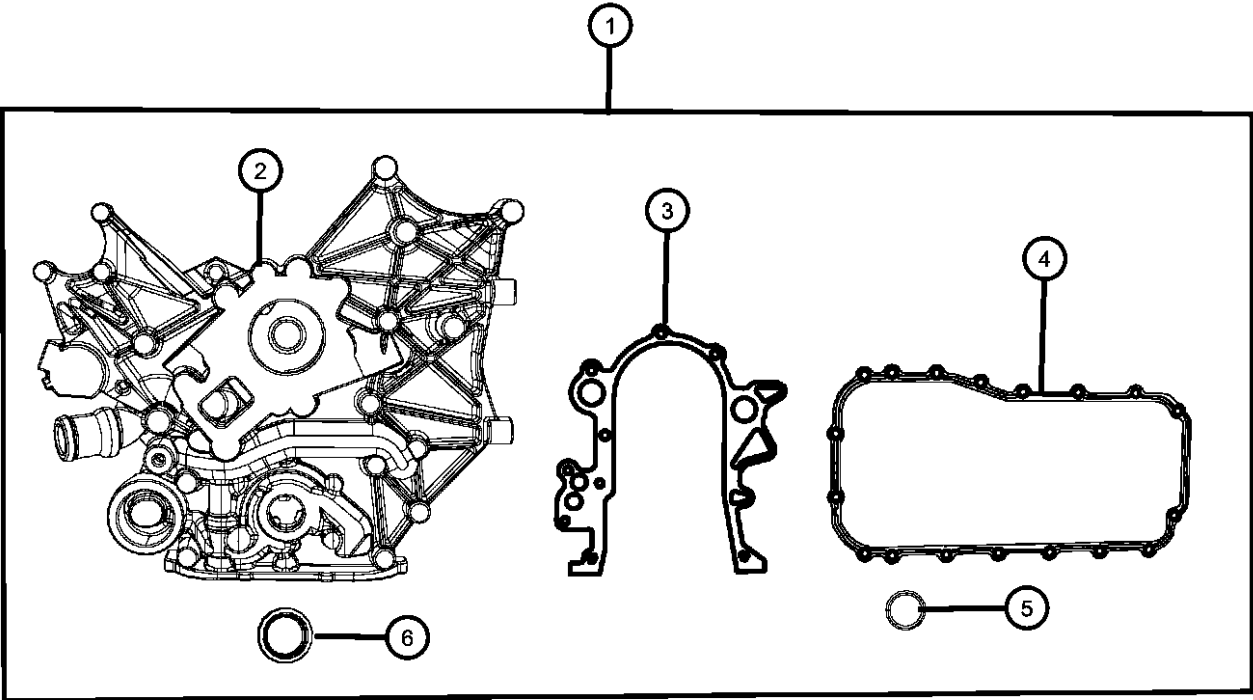


ITEM	PART NUMBER	QTY	LINE	SERIES	BODY	ENGINE	TRANS	TRIM	DESCRIPTION
16	04892450AA	6	J, U			EGT			Small Bore
		6	J, T, U			EGT			Small Bore
									CAMSHAFT, Engine
17	04781061AA	1	J, U			EGT			
		1	J, T, U			EGT			
									SEAT, Valve Spring
18	04781509AA	12	J, U			EGT			
		12	J, T, U			EGT			
									PUSH ROD, Valve
19	04781024AA	12	J, U			EGT			
		12	J, T, U			EGT			
									RETAINER, Tappet Yoke Aligning
20	04448933	1	J, U			EGT			
		1	J, T, U			EGT			
									PLUG, Camshaft
21	04694337	1	J, U			EGT			
		1	J, T, U			EGT			
									BEARING, Camshaft, Serviced in Short Engine, (NOT SERVICED)
22		1							GUIDE, Intake/Exhaust Valve, Standard Size, Serviced in Cylinder Head, (NOT SERVICED)
23		1							SEAT, Exhaust Valve, Serviced in Cylinder Head, (NOT SERVICED)
24		1							SEAT, Intake Valve, Serviced in Cylinder Head, (NOT SERVICED)

WRANGLER (JK)		BODY		ENGINE	TRANSMISSION
SERIES	LINE				
P = PREMIUM	T = JEEP - 2WD	72 = SPORT UTILITY 2-DR		EGT = 3.8L V6 SMPI Engine	DEH = 6-Speed Manual NSG370
S = SPORT	J = JEEP - 4WD	TYPE #2		ENS = 2.8L 4 Cyl TD Next	Transmission
M = MEDIUM	U = JEEP - 4WD (RHD)	74 = SPORT UTILITY 4-DR		Generation Engine	DGV = 4-Spd. Automatic VLP 42RLE
L = LOWLINE		TYPE #4			Trans
					DGQ = 5-Spd Automatic 545RFE
					Transmission

AR = use ase required - = Non illustrated part

Timing Case Cover 3.8L [EGT]  
Figure 009EGT-605



ITEM	PART NUMBER	QTY	LINE	SERIES	BODY	ENGINE	TRANS	TRIM	DESCRIPTION
------	-------------	-----	------	--------	------	--------	-------	------	-------------

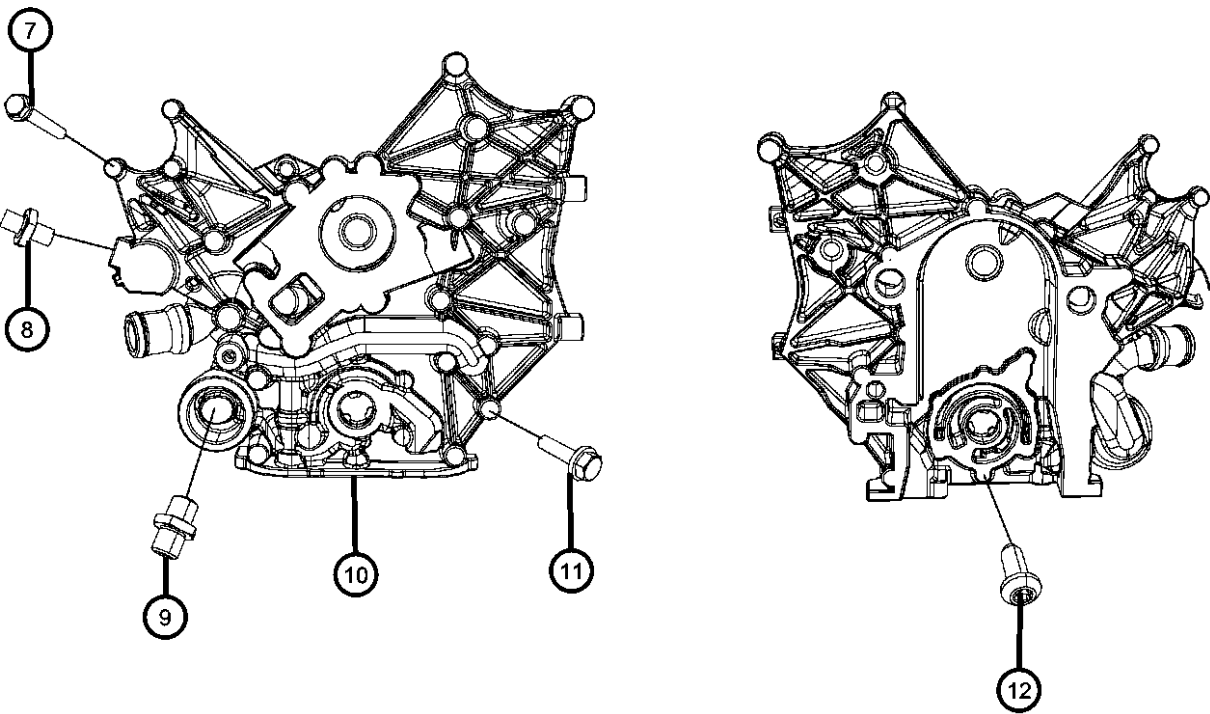
NOTE:  
Sales Codes:  
[DBB] = All Manual Transmissions  
[DEH] = 6-Speed Manual NSG370 Transmission  
[DGQ] = 5-Speed Automatic 545RFE Transmission  
[DGV] = 4-Speed Automatic VLP 42RLE Transmission  
[DG0] = All Automatic Transmissions  
[DHE] = Manual Shift On The Fly NVG 241 Generation II Transfer Case  
[DHW] = 4:1 Rock-Trac H.D. Part Time 4WD NVG 241 Transfer Case  
[EGT] = 3.8L V-6 SMPI Engine  
[EG0] = All V-6 Engines  
[ENS] = 2.8L 4 Cylinder Turbo Diesel Next Generation  
[EN0] = All Turbo Diesel Engines  
[NAA] = Federal Emissions  
[NAE] = California Emissions  
[NAS] = 50 State Emissions  
[NA1] = Export Emissions  
[XEF] = Transfer Case Skid Plate Shield

1									COVER KIT, Timing, Includes All Parts In The Box
	68003438AA	1	J, U			EGT			
		1	J, T, U			EGT			
2		1							COVER, Timing Case, [Serviced In Package Item 1 Only], (NOT SERVICED)
3									GASKET, Chain Case Cover
	04621987AC	1	J, U			EGT			
		1	J, T, U			EGT			
4									GASKET, Oil Pan
	04448896AB	1	J, U			EGT			
		1	J, T, U			EGT			
5									SEAL, Oil Pick Up Tube
	06032920	1	J, U			EGT			
		1	J, T, U			EGT			
6									SEAL, Crankshaft Oil, Front
	04273275	1	J, U			EGT			
		1	J, T, U			EGT			
7									BOLT AND WASHER, Hex Head, M10x1.50x85.00
	06101330	4	J, U			EGT			Chain Case Cover To Cylinder Block, Mounting

WRANGLER (JK)				
SERIES	LINE	BODY	ENGINE	TRANSMISSION
P = PREMIUM	T = JEEP - 2WD	72 = SPORT UTILITY 2-DR	EGT = 3.8L V6 SMPI Engine	DEH = 6-Speed Manual NSG370
S = SPORT	J = JEEP - 4WD	TYPE #2	ENS = 2.8L 4 Cyl TD Next	Transmission
M = MEDIUM	U = JEEP - 4WD (RHD)	74 = SPORT UTILITY 4-DR	Generation Engine	DGV = 4-Spd. Automatic VLP 42RLE
L = LOWLINE		TYPE #4		Trans
				DGQ = 5-Spd Automatic 545RFE
				Transmission

Timing Case Cover 3.8L [EGT]  
Figure 009EGT-605

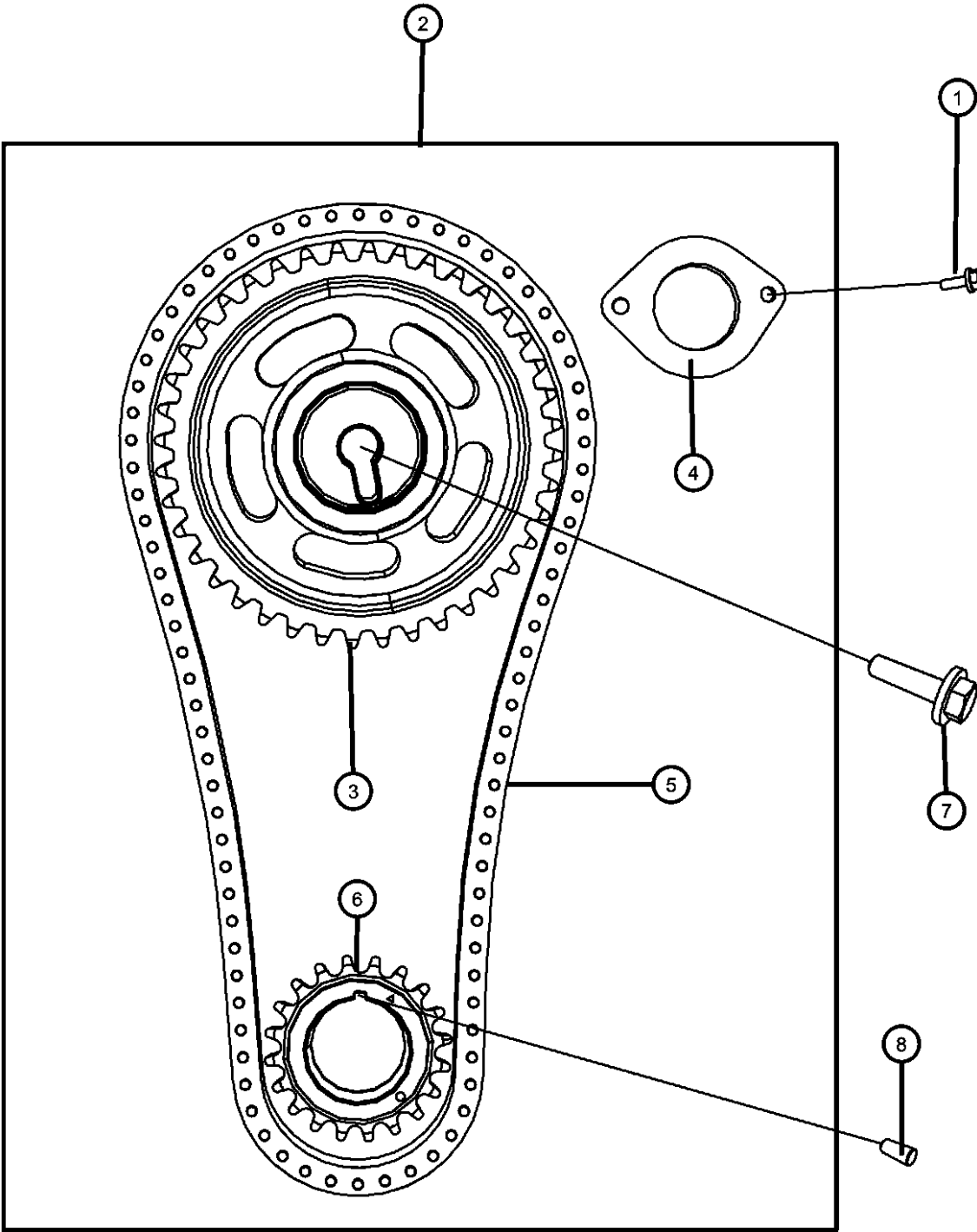
ITEM	PART NUMBER	QTY	LINE	SERIES	BODY	ENGINE	TRANS	TRIM	DESCRIPTION
8	06035854	4	J, T, U			EGT			Chain Case Cover To Cylinder Block, Mounting NIPPLE, .375-18X2.00
		1	J, U			EGT			
		1	J, T, U			EGT			
									CONNECTOR, Oil Filter, 3/4-16-2A
9	53007563AB	1	J, U			EGT			
		1	J, T, U			EGT			
10		1							COVER, Timing Case, Front View [Serviced In Package Item 1 Only], (NOT SERVICED)
11	06101326	9	J, U			EGT			BOLT AND CONED WASHER, Hex Head, M8X1.25X80.00
		9	J, T, U			EGT			Cover To Cylinder Block, Mounting
12	04892090AA								COVER, Timing Case, Front View [Serviced In Package Item 1 Only], (NOT SERVICED)
		7	J, U			EGT			BOLT AND CONED WASHER, Hex Head, M8X1.25X80.00
		7	J, T, U			EGT			Cover To Cylinder Block, Mounting



WRANGLER (JK)		BODY		ENGINE	TRANSMISSION
SERIES	LINE				
P = PREMIUM	T = JEEP - 2WD	72 = SPORT UTILITY 2-DR		EGT = 3.8L V6 SMPI Engine	DEH = 6-Speed Manual NSG370
S = SPORT	J = JEEP - 4WD	TYPE #2		ENS = 2.8L 4 Cyl TD Next	Transmission
M = MEDIUM	U = JEEP - 4WD (RHD)	74 = SPORT UTILITY 4-DR		Generation Engine	DGV = 4-Spd. Automatic VLP 42RLE
L = LOWLINE		TYPE #4			Trans
					DGQ = 5-Spd Automatic 545RFE
					Transmission

AR = use ase required - = Non illustrated part

Timing System 3.8L [EGT]  
Figure 009EGT-625



ITEM	PART NUMBER	QTY	LINE	SERIES	BODY	ENGINE	TRANS	TRIM	DESCRIPTION
------	-------------	-----	------	--------	------	--------	-------	------	-------------

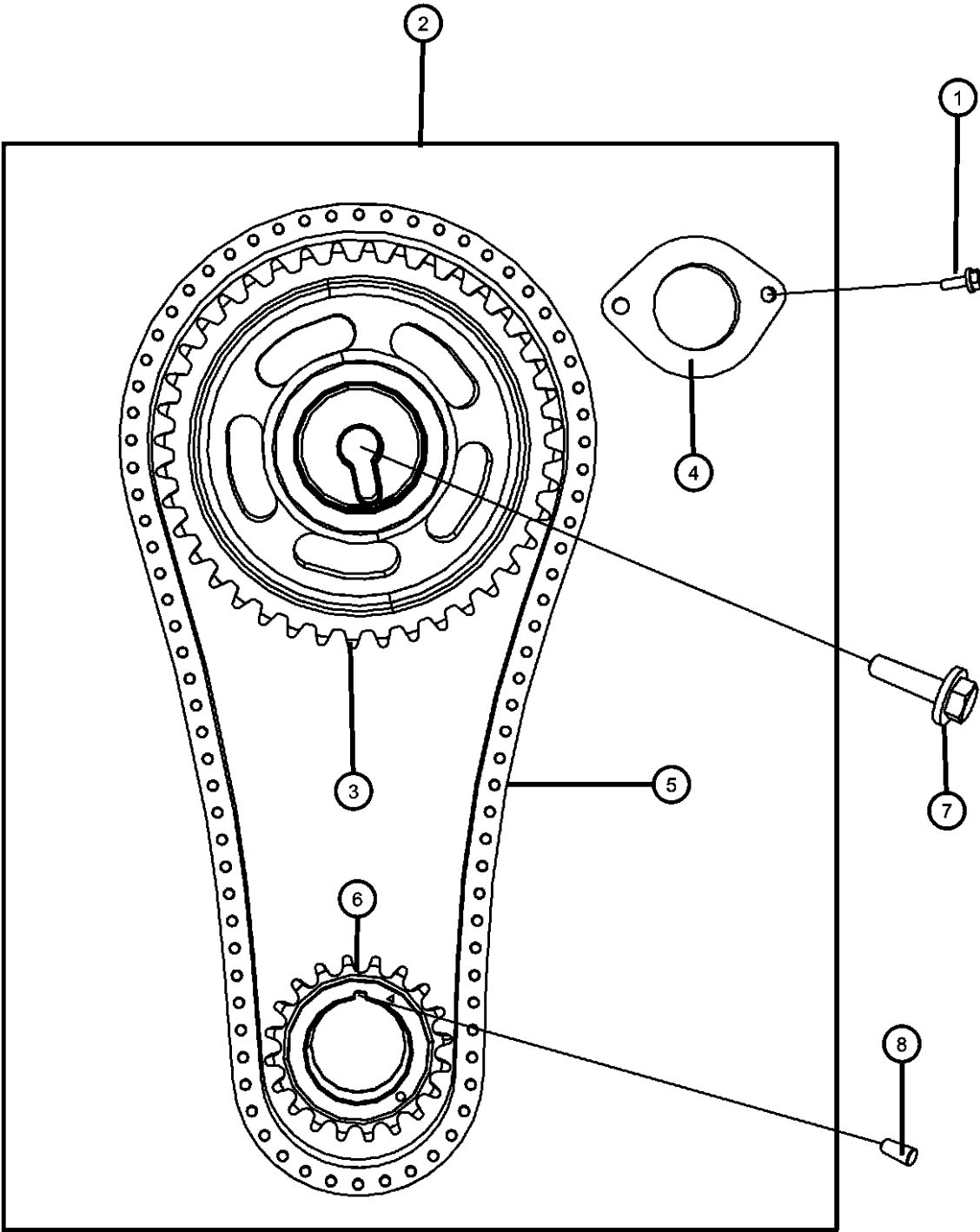
NOTE:  
Sales Codes:  
[DBB] = All Manual Transmissions  
[DEH] = 6-Speed Manual NSG370 Transmission  
[DGQ] = 5-Speed Automatic 545RFE Transmission  
[DGV] = 4-Speed Automatic VLP 42RLE Transmission  
[DGO] = All Automatic Transmissions  
[DHE] = Manual Shift On The Fly NVG 241 Generation II Transfer Case  
[DHW] = 4:1 Rock-Trac H.D. Part Time 4WD NVG 241 Transfer Case  
[EGT] = 3.8L V-6 SMPI Engine  
[EG0] = All V-6 Engines  
[ENS] = 2.8L 4 Cylinder Turbo Diesel Next Generation  
[EN0] = All Turbo Diesel Engines  
[NAA] = Federal Emissions  
[NAE] = California Emissions  
[NAS] = 50 State Emissions  
[NA1] = Export Emissions  
[XEF] = Transfer Case Skid Plate Shield

1									BOLT AND WASHER, M6x12
	06102001	2	J, U			EGT			Camshaft Thrust Plate To Cylinder Block, Mounting
		2	J, T, U			EGT			Camshaft Thrust Plate To Cylinder Block, Mounting
2									CHAIN & GEAR PACKAGE, Engine Timing
	68001402AA	1	J, U			EGT			
		1	J, T, U			EGT			
3									SPROCKET, Camshaft
	05137663AA	1	J, T, U			EGT			
		1	J, U			EGT			
4									PLATE, Camshaft Thrust
	04621623	1	J, U			EGT			
		1	J, T, U			EGT			
5									CHAIN, Timing
	04666059AA	1	J, U			EGT			
		1	J, T, U			EGT			
6									GEAR, Crankshaft
	04648921AA	1	J, U			EGT			
		1	J, T, U			EGT			
7									SCREW AND WASHER, Hex Head, M10x1.5x40

WRANGLER (JK)		BODY		ENGINE		TRANSMISSION	
SERIES	LINE						
P = PREMIUM	T = JEEP - 2WD	72 = SPORT UTILITY 2-DR		EGT = 3.8L V6 SMPI Engine		DEH = 6-Speed Manual NSG370	
S = SPORT	J = JEEP - 4WD	TYPE #2		ENS = 2.8L 4 Cyl TD Next		Transmission	
M = MEDIUM	U = JEEP - 4WD (RHD)	74 = SPORT UTILITY 4-DR		Generation Engine		DGV = 4-Spd. Automatic VLP 42RLE	
L = LOWLINE		TYPE #4				Trans	
						DGQ = 5-Spd Automatic 545RFE	
						Transmission	

AR = use ase required - = Non illustrated part

Timing System 3.8L [EGT]  
Figure 009EGT-625



ITEM	PART NUMBER	QTY	LINE	SERIES	BODY	ENGINE	TRANS	TRIM	DESCRIPTION
8	06101062	1	J, T, U			EGT			Camshaft Sprocket To Camshaft, Mounting
		1	J, U			EGT			Camshaft Sprocket To Camshaft, Mounting
									DOWEL PIN
	04448557	1	J, U			EGT			Crankshaft Sprocket
		1	J, T, U			EGT			Crankshaft Sprocket

WRANGLER (JK)					
SERIES	LINE	BODY	ENGINE	TRANSMISSION	
P = PREMIUM	T = JEEP - 2WD	72 = SPORT UTILITY 2-DR	EGT = 3.8L V6 SMPI Engine	DEH = 6-Speed Manual NSG370	
S = SPORT	J = JEEP - 4WD	TYPE #2	ENS = 2.8L 4 Cyl TD Next	Transmission	
M = MEDIUM	U = JEEP - 4WD (RHD)	74 = SPORT UTILITY 4-DR	Generation Engine	DGV = 4-Spd. Automatic VLP 42RLE	
L = LOWLINE		TYPE #4		Trans	
				DGQ = 5-Spd Automatic 545RFE	
				Transmission	

Engine Oiling Pump 3.8L [EGT]  
Figure 009EGT-705

ITEM	PART NUMBER	QTY	LINE	SERIES	BODY	ENGINE	TRANS	TRIM	DESCRIPTION
------	----------------	-----	------	--------	------	--------	-------	------	-------------

NOTE:  
Sales Codes:  
[DBB] = All Manual Transmissions  
[DEH] = 6-Speed Manual NSG370 Transmission  
[DGQ] = 5-Speed Automatic 545RFE Transmission  
[DGV] = 4-Speed Automatic VLP 42RLE Transmission  
[DGO] = All Automatic Transmissions  
[DHE] = Manual Shift On The Fly NVG 241 Generation II Transfer Case  
[DHW] = 4:1 Rock-Trac H.D. Part Time 4WD NVG 241 Transfer Case  
[EGT] = 3.8L V-6 SMPI Engine  
[EG0] = All V-6 Engines  
[ENS] = 2.8L 4 Cylinder Turbo Diesel Next Generation  
[EN0] = All Turbo Diesel Engines  
[NAA] = Federal Emissions  
[NAE] = California Emissions  
[NAS] = 50 State Emissions  
[NA1] = Export Emissions  
[XEF] = Transfer Case Skid Plate Shield

1									ROTOR SET, Oil Pump
	05143977AA	1	J, U			EGT			
		1	J, T, U			EGT			
2		1							ROTOR, Oil Pump, Inner Serviced In Item 1, (NOT SERVICED)
3		1							ROTOR, Oil Pump, Outer Serviced In Item 1, (NOT SERVICED)
4									PLUNGER, Oil Pressure Relief Valve
	04648970AB	1	J, U			EGT			
		1	J, T, U			EGT			
5									SPRING, Oil Pressure Relief Valve
	02402473	1	J, U			EGT			
		1	J, T, U			EGT			
6									CAP, Oil Pressure Relief Valve
	04666081AA	1	J, U			EGT			
		1	J, T, U			EGT			
7									SCREW, Torx Head, M6x1.00x15.00
	04892090AA	7	J, U			EGT			Oil Pump Cover, Mounting
		7	J, T, U			EGT			Oil Pump Cover, Mounting
8									COVER, Engine Oil Pump

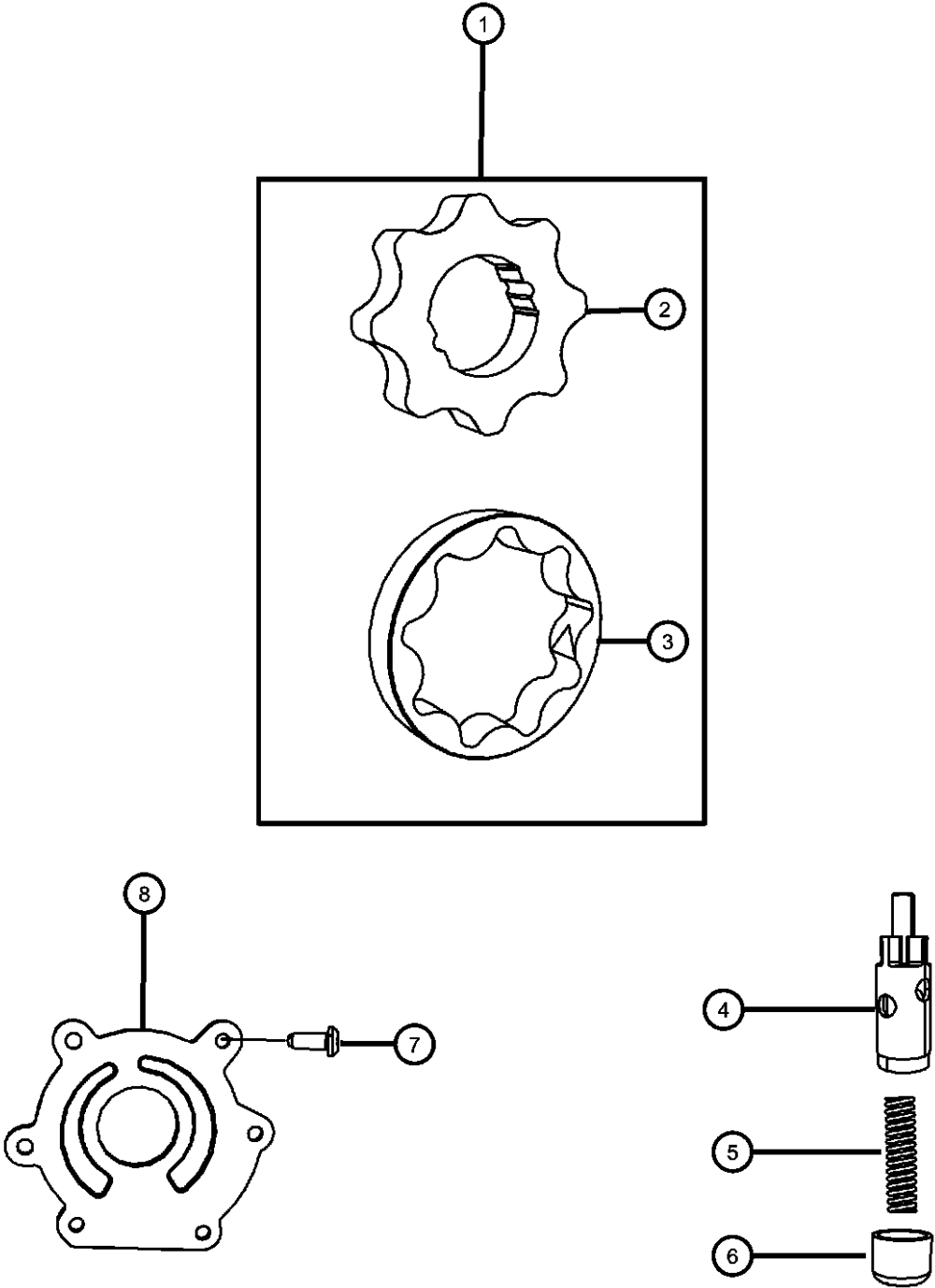
WRANGLER (JK)		BODY		ENGINE	TRANSMISSION
SERIES	LINE				
P = PREMIUM	T = JEEP - 2WD	72 = SPORT UTILITY 2-DR		EGT = 3.8L V6 SMPI Engine	DEH = 6-Speed Manual NSG370
S = SPORT	J = JEEP - 4WD	TYPE #2		ENS = 2.8L 4 Cyl TD Next	Transmission
M = MEDIUM	U = JEEP - 4WD (RHD)	74 = SPORT UTILITY 4-DR		Generation Engine	DGV = 4-Spd. Automatic VLP 42RLE
L = LOWLINE		TYPE #4			Trans
					DGQ = 5-Spd Automatic 545RFE
					Transmission

AR = use ase required - = Non illustrated part

Engine Oiling Pump 3.8L [EGT]  
Figure 009EGT-705

ITEM	PART NUMBER	QTY	LINE	SERIES	BODY	ENGINE	TRANS	TRIM	DESCRIPTION
------	-------------	-----	------	--------	------	--------	-------	------	-------------

04666109AA	1	J, T, U	EGT
	1	J, U	EGT

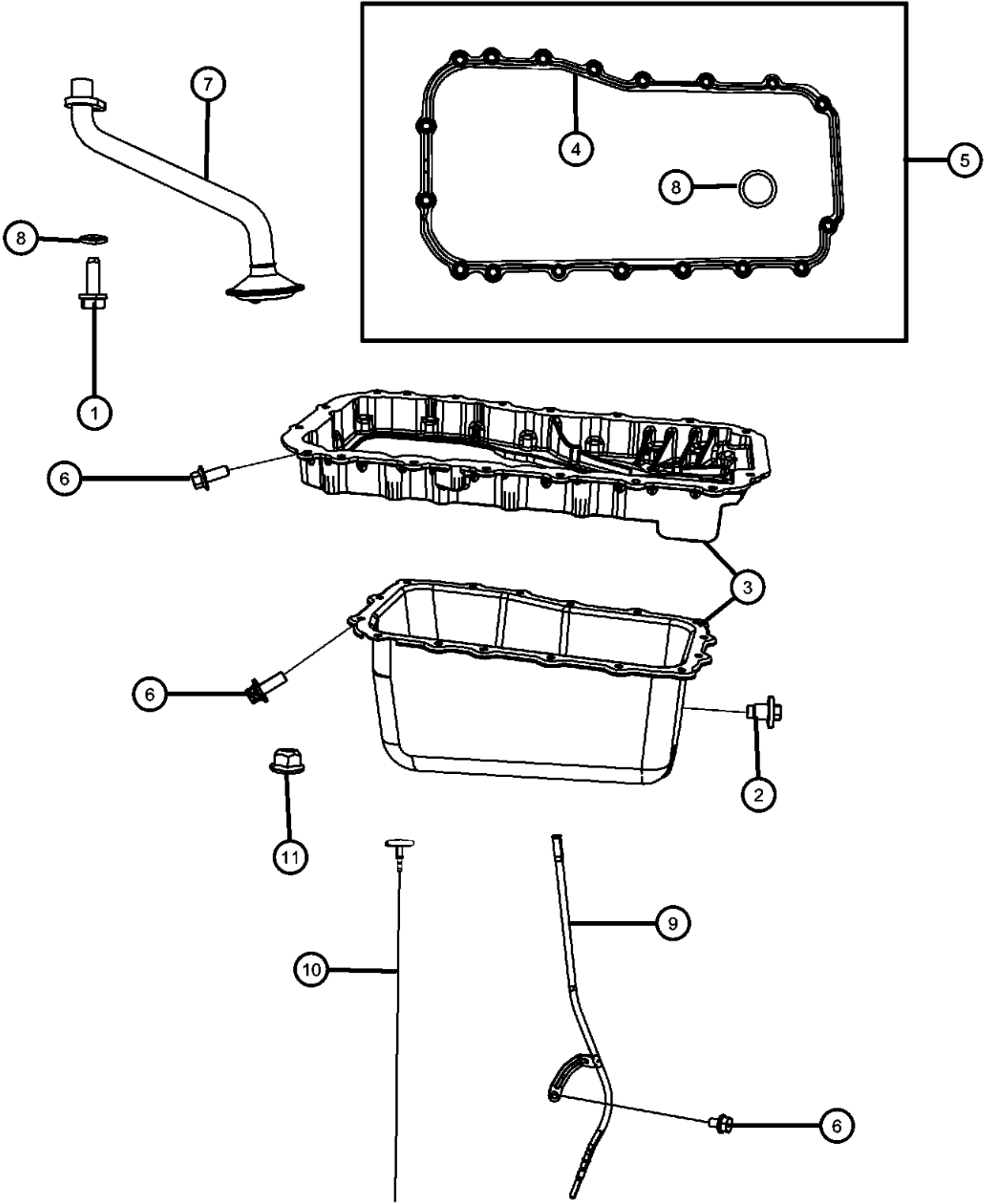


WRANGLER (JK)		BODY		ENGINE	TRANSMISSION
SERIES	LINE				
P = PREMIUM	T = JEEP - 2WD	72 = SPORT UTILITY 2-DR	EGT = 3.8L V6 SMPI Engine	DEH = 6-Speed Manual NSG370	
S = SPORT	J = JEEP - 4WD	TYPE #2	ENS = 2.8L 4 Cyl TD Next	Transmission	
M = MEDIUM	U = JEEP - 4WD (RHD)	74 = SPORT UTILITY 4-DR	Generation Engine	DGV = 4-Spd. Automatic VLP 42RLE	
L = LOWLINE		TYPE #4		Trans	
				DGQ = 5-Spd Automatic 545RFE	
				Transmission	

AR = use ase required - = Non illustrated part



Engine Oil Pan, Engine Oil Level Indicator, And Related Parts 3.8L [EGT]  
Figure 009EGT-725



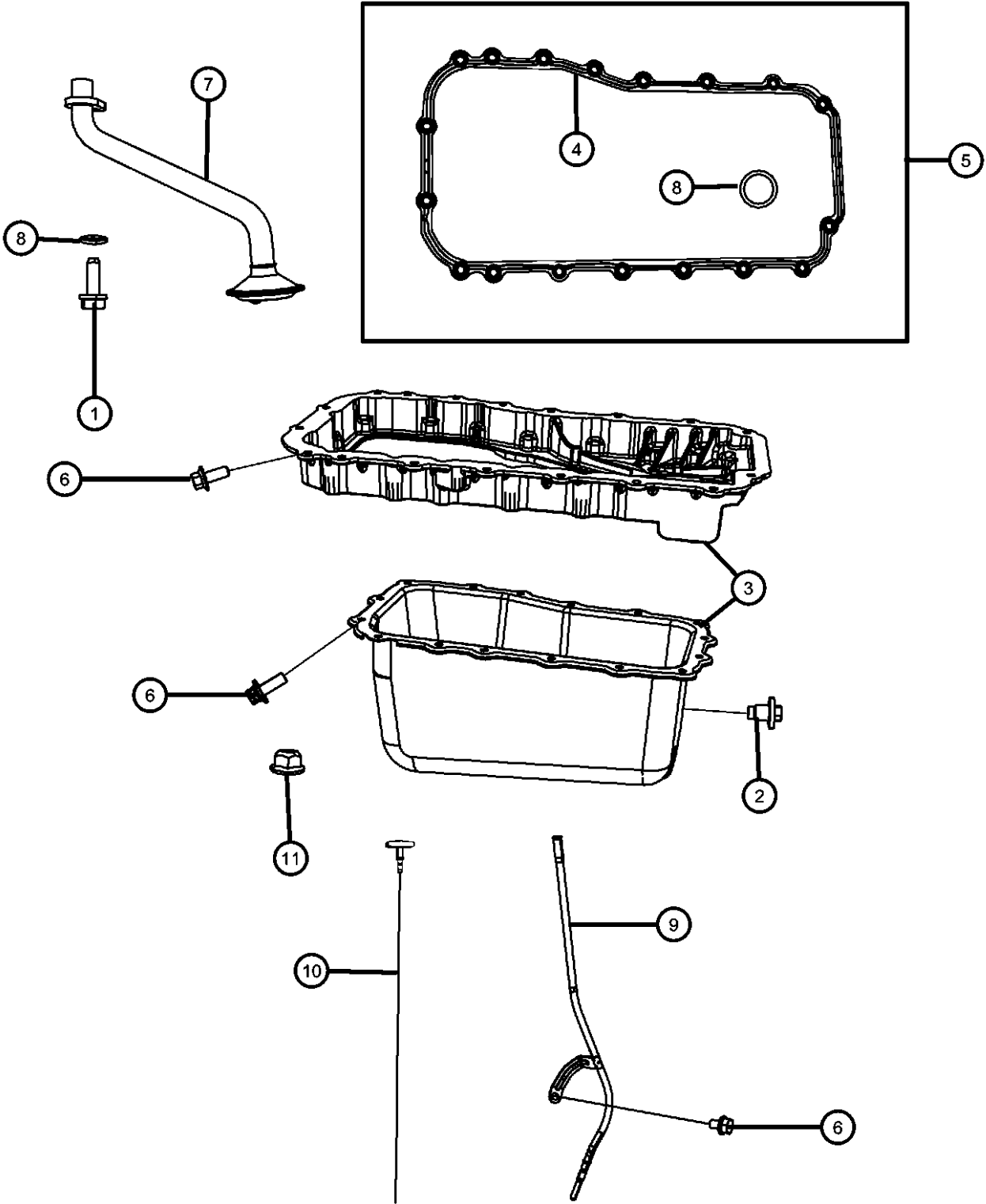
ITEM	PART NUMBER	QTY	LINE	SERIES	BODY	ENGINE	TRANS	TRIM	DESCRIPTION
------	-------------	-----	------	--------	------	--------	-------	------	-------------

NOTE:  
Sales Codes:  
[DBB] = All Manual Transmissions  
[DEH] = 6-Speed Manual NSG370 Transmission  
[DGQ] = 5-Speed Automatic 545RFE Transmission  
[DGV] = 4-Speed Automatic VLP 42RLE Transmission  
[DG0] = All Automatic Transmissions  
[DHE] = Manual Shift On The Fly NVG 241 Generation II Transfer Case  
[DHW] = 4:1 Rock-Trac H.D. Part Time 4WD NVG 241 Transfer Case  
[EGT] = 3.8L V-6 SMPI Engine  
[EG0] = All V-6 Engines  
[ENS] = 2.8L 4 Cylinder Turbo Diesel Next Generation  
[EN0] = All Turbo Diesel Engines  
[NAA] = Federal Emissions  
[NAE] = California Emissions  
[NAS] = 50 State Emissions  
[NA1] = Export Emissions  
[XEF] = Transfer Case Skid Plate Shield

1	06500070	1	J, U			EGT			BOLT, [M8x1.25x25.25] Oil Pickup Tube, Mounting
		1	J, T, U			EGT			Oil Pickup Tube, Mounting
2	06507741AA	1	J, U			EGT			PLUG, Oil Drain, [M14x1.50x21.50]
		1	J, T, U			EGT			
3	04666153AC	1	J, U			EGT			PAN, Oil
		1	J, T, U			EGT			
4	04448896AB	1	J, U			EGT			GASKET, Oil Pan Oil Pan Gasket Only
		1	J, T, U			EGT			Oil Pan Gasket Only
5	05241062AB	1	J, U			EGT			GASKET PACKAGE, Engine Oil Pan Includes Pan Gasket And Pick-up Tube O-Ring
		1	J, T, U			EGT			Includes Pan Gasket And Pick-up Tube O-Ring
6	06104144AA	16	J, U			EGT			BOLT Lower To Upper Casting, Mounting
		16	J, T, U			EGT			Lower To Upper Casting, Mounting
7									PICKUP, Engine Oil

WRANGLER (JK)		BODY		ENGINE		TRANSMISSION	
SERIES	LINE	TYPE #2		Generation Engine		Trans	
P = PREMIUM	T = JEEP - 2WD	72 = SPORT UTILITY 2-DR		EGT = 3.8L V6 SMPI Engine		DEH = 6-Speed Manual NSG370	
S = SPORT	J = JEEP - 4WD	74 = SPORT UTILITY 4-DR		ENS = 2.8L 4 Cyl TD Next		Transmission	
M = MEDIUM	U = JEEP - 4WD (RHD)	TYPE #4				DGV = 4-Spd. Automatic VLP 42RLE	
L = LOWLINE						Trans	
						DGQ = 5-Spd Automatic 545RFE	
						Transmission	

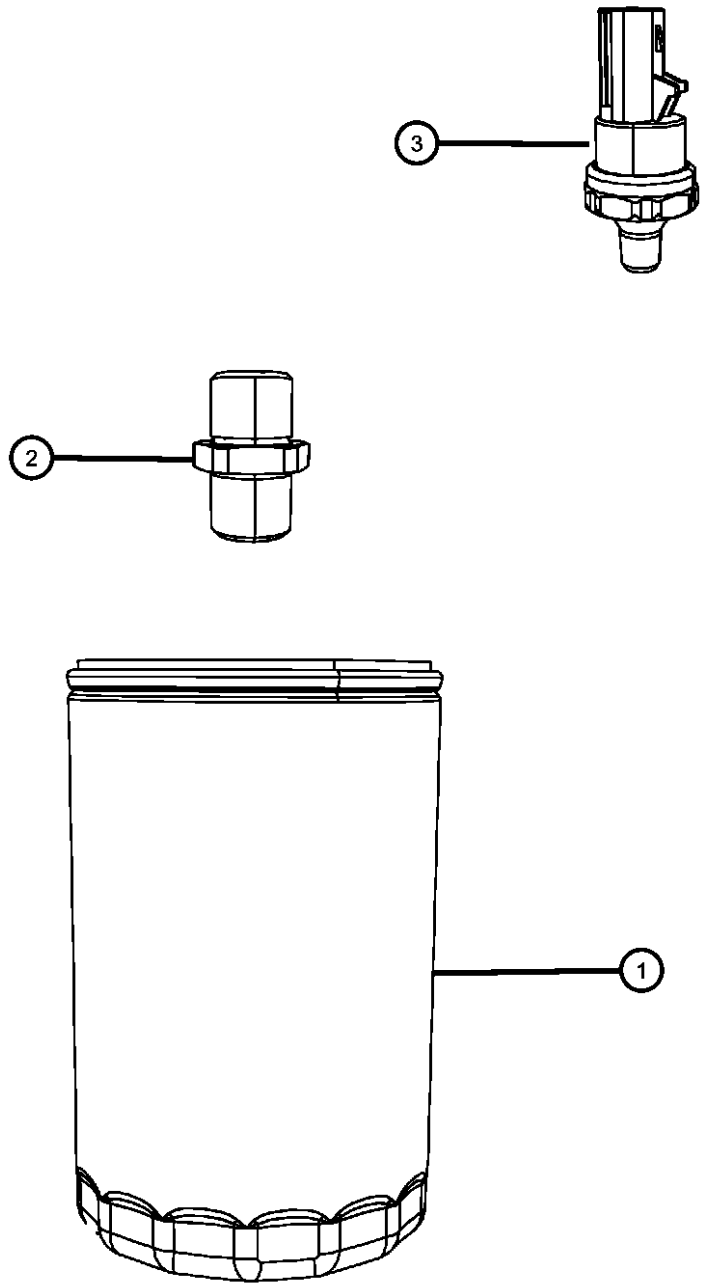
Engine Oil Pan, Engine Oil Level Indicator, And Related Parts 3.8L [EGT]  
Figure 009EGT-725



ITEM	PART NUMBER	QTY	LINE	SERIES	BODY	ENGINE	TRANS	TRIM	DESCRIPTION
8	04666028AA	1	J, T, U			EGT			SEAL, Oil Pick Up Tube
		1	J, U			EGT			
9	06032920	1	J, U			EGT			TUBE, Engine Oil Indicator
		1	J, T, U			EGT			
10	04666040AC	1	J, U			EGT			INDICATOR, Engine Oil Level
		1	J, T, U			EGT			
11	04666094AB	1	J, U			EGT			NUT, M6x1.00
		1	J, T, U			EGT			
	06101694	2	J, U			EGT			Oil Pan To Timing Cover, Mounting
		2	J, T, U			EGT			

WRANGLER (JK)		BODY		ENGINE		TRANSMISSION	
SERIES	LINE						
P = PREMIUM	T = JEEP - 2WD	72 = SPORT UTILITY 2-DR		EGT = 3.8L V6 SMPI Engine		DEH = 6-Speed Manual NSG370	
S = SPORT	J = JEEP - 4WD	TYPE #2		ENS = 2.8L 4 Cyl TD Next		Transmission	
M = MEDIUM	U = JEEP - 4WD (RHD)	74 = SPORT UTILITY 4-DR		Generation Engine		DGV = 4-Spd. Automatic VLP 42RLE	
L = LOWLINE		TYPE #4				Trans	
						DGQ = 5-Spd Automatic 545RFE	
						Transmission	

Engine Oil Filter 3.8L [EGT]  
Figure 009EGT-745

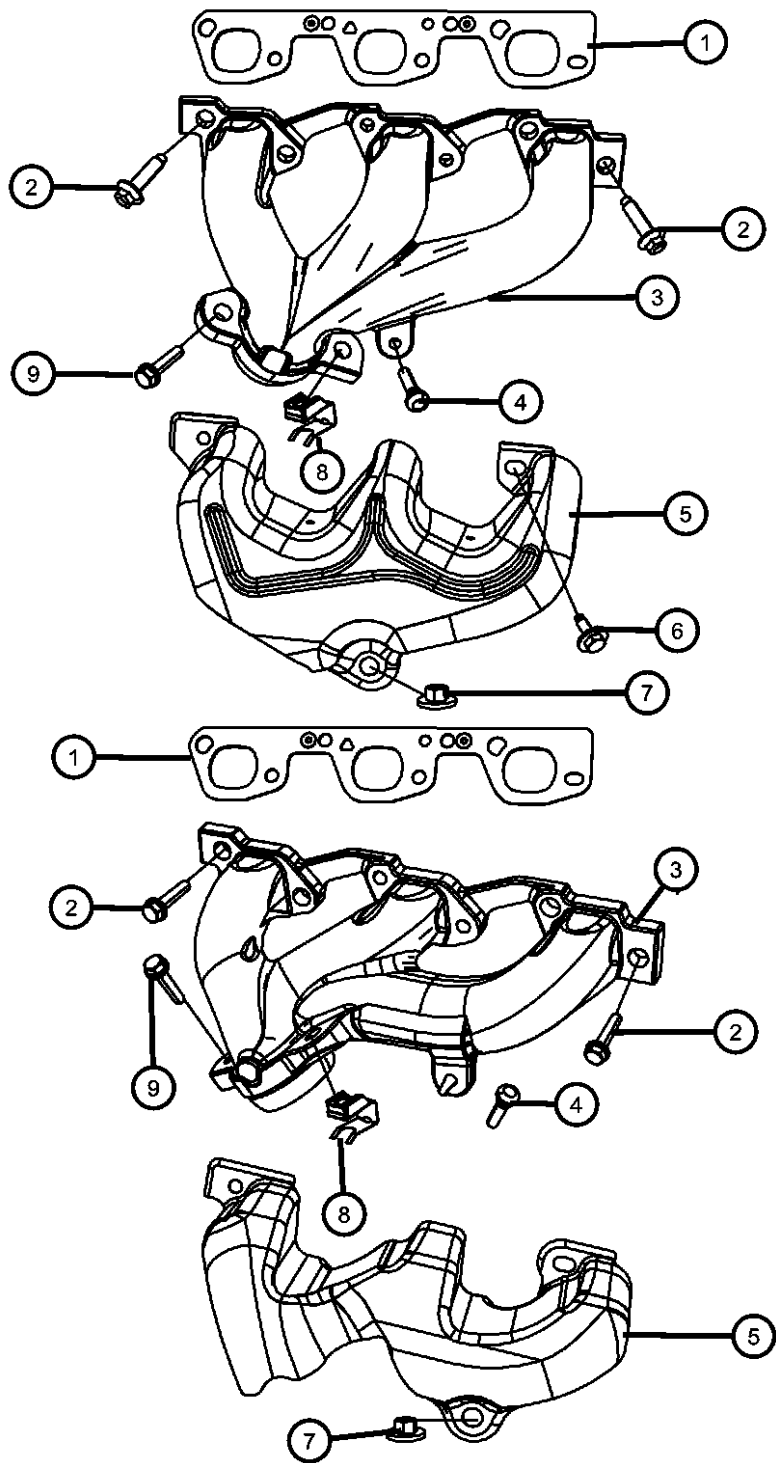


ITEM	PART NUMBER	QTY	LINE	SERIES	BODY	ENGINE	TRANS	TRIM	DESCRIPTION
------	----------------	-----	------	--------	------	--------	-------	------	-------------

NOTE: Sales Codes: [DBB] = All Manual Transmissions [DEH] = 6-Speed Manual NSG370 Transmission [DGQ] = 5-Speed Automatic 545RFE Transmission [DGV] = 4-Speed Automatic VLP 42RLE Transmission [DG0] = All Automatic Transmissions [DHE] = Manual Shift On The Fly NVG 241 Generation II Transfer Case [DHW] = 4:1 Rock-Trac H.D. Part Time 4WD NVG 241 Transfer Case [EGT] = 3.8L V-6 SMPI Engine [EG0] = All V-6 Engines [ENS] = 2.8L 4 Cylinder Turbo Diesel Next Generation [EN0] = All Turbo Diesel Engines [NAA] = Federal Emissions [NAE] = California Emissions [NAS] = 50 State Emissions [NA1] = Export Emissions [XEF] = Transfer Case Skid Plate Shield									
1	04105409AC 0FE00213	1	J, T, U			EGT			FILTER, Engine Oil Canadian Aftermarket Part
2	53007563AB	1	J, U			EGT			CONNECTOR, Oil Filter
		1	J, T, U			EGT			
3	05149098AA	1	J, U			EGT			SENDING UNIT, Oil Pressure
		1	J, T, U			EGT			

WRANGLER (JK)								
SERIES	LINE	BODY	ENGINE	TRANSMISSION				
P = PREMIUM	T = JEEP - 2WD	72 = SPORT UTILITY 2-DR	EGT = 3.8L V6 SMPI Engine	DEH = 6-Speed Manual NSG370				
S = SPORT	J = JEEP - 4WD	TYPE #2	ENS = 2.8L 4 Cyl TD Next	Transmission				
M = MEDIUM	U = JEEP - 4WD (RHD)	74 = SPORT UTILITY 4-DR	Generation Engine	DGV = 4-Spd. Automatic VLP 42RLE				
L = LOWLINE		TYPE #4		Trans				
				DGQ = 5-Spd Automatic 545RFE				
				Transmission				

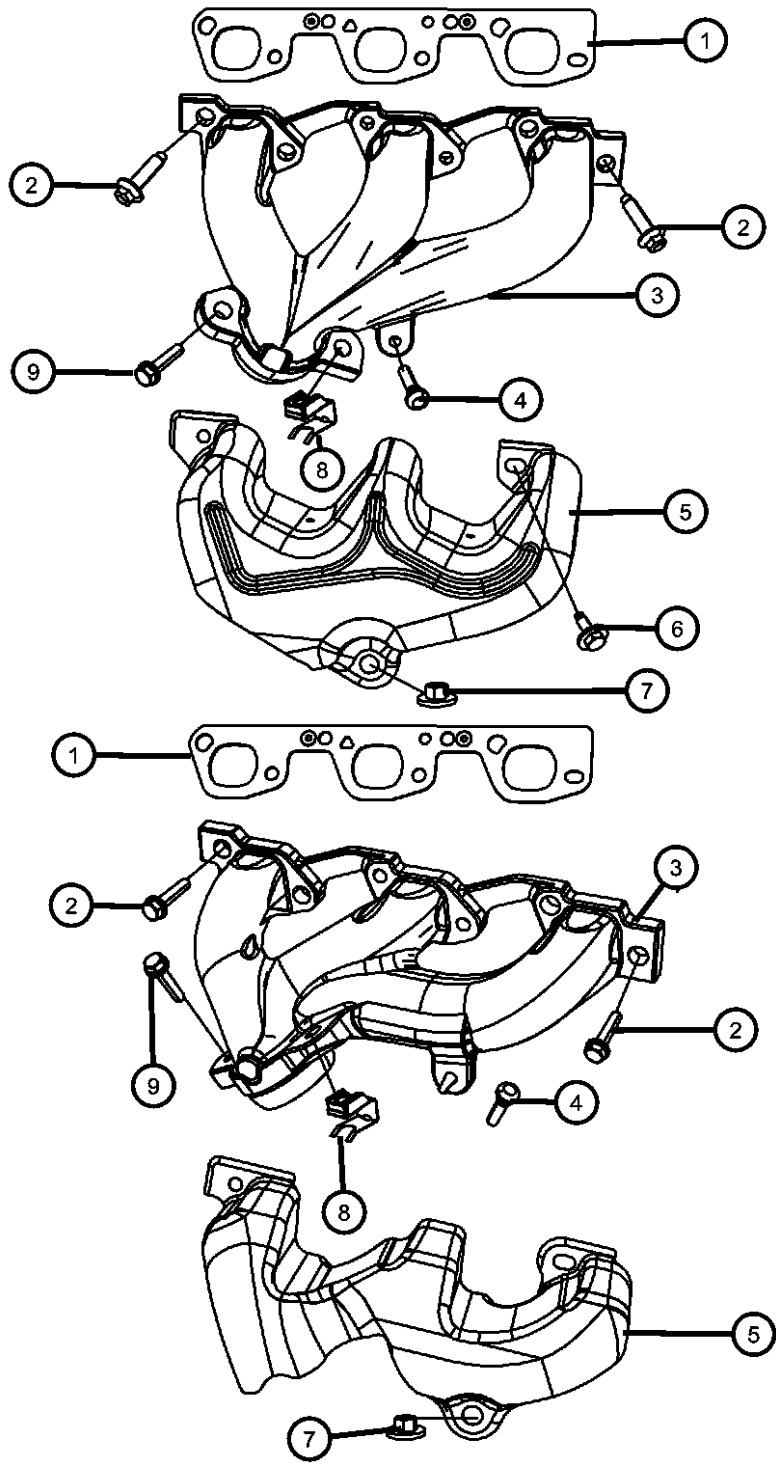
Exhaust Manifold And Heat Shields 3.8L [EGT]  
Figure 009EGT-1005



ITEM	PART NUMBER	QTY	LINE	SERIES	BODY	ENGINE	TRANS	TRIM	DESCRIPTION
NOTE: Sales Codes: [DBB] = All Manual Transmissions [DEH] = 6-Speed Manual NSG370 Transmission [DGQ] = 5-Speed Automatic 545RFE Transmission [DGV] = 4-Speed Automatic VLP 42RLE Transmission [DGO] = All Automatic Transmissions [DHE] = Manual Shift On The Fly NVG 241 Generation II Transfer Case [DHW] = 4:1 Rock-Trac H.D. Part Time 4WD NVG 241 Transfer Case [EGT] = 3.8L V-6 SMPI Engine [EG0] = All V-6 Engines [ENS] = 2.8L 4 Cylinder Turbo Diesel Next Generation [EN0] = All Turbo Diesel Engines [NAA] = Federal Emissions [NAE] = California Emissions [NAS] = 50 State Emissions [NA1] = Export Emissions [XEF] = Transfer Case Skid Plate Shield									
1									GASKET, Exhaust Manifold
	04892409AA	2	J, U			EGT			Right And Left
		2	J, T, U			EGT			Right And Left
2									BOLT, M8x1.25x30
	06507938AA	12	J, U			EGT			Exhaust Manifold To Cylinder Head, Mounting
		12	J, T, U			EGT			Exhaust Manifold To Cylinder Head, Mounting
3									MANIFOLD, Exhaust
	04666024AD	1	J, U			EGT			Left
		1	J, T, U			EGT			Left
	04666026AC	1	J, U			EGT			Right
		1	J, T, U			EGT			Right
4		1							STUD, Exhaust Heat Shield, Serviced With Item 3 Exhaust Manifold, (NOT SERVICED)
5									SHIELD, Exhaust Manifold
	04666037AA	1	J, U			EGT			Left
		1	J, T, U			EGT			Left
	04666038AB	1	J, U			EGT			Right
		1	J, T, U			EGT			Right
	04892448AB	1	J, U			EGT			Water Shield
		1	J, T, U			EGT			
WRANGLER (JK)									
SERIES		LINE		BODY		ENGINE		TRANSMISSION	
P = PREMIUM		T = JEEP - 2WD		72 = SPORT UTILITY 2-DR		EGT = 3.8L V6 SMPI Engine		DEH = 6-Speed Manual NSG370	
S = SPORT		J = JEEP - 4WD		TYPE #2		ENS = 2.8L 4 Cyl TD Next		Transmission	
M = MEDIUM		U = JEEP - 4WD (RHD)		74 = SPORT UTILITY 4-DR		Generation Engine		DGV = 4-Spd. Automatic VLP 42RLE	
L = LOWLINE				TYPE #4				Trans	
								DGQ = 5-Spd Automatic 545RFE	
								Transmission	

AR = use ase required - = Non illustrated part

Exhaust Manifold And Heat Shields 3.8L [EGT]  
Figure 009EGT-1005

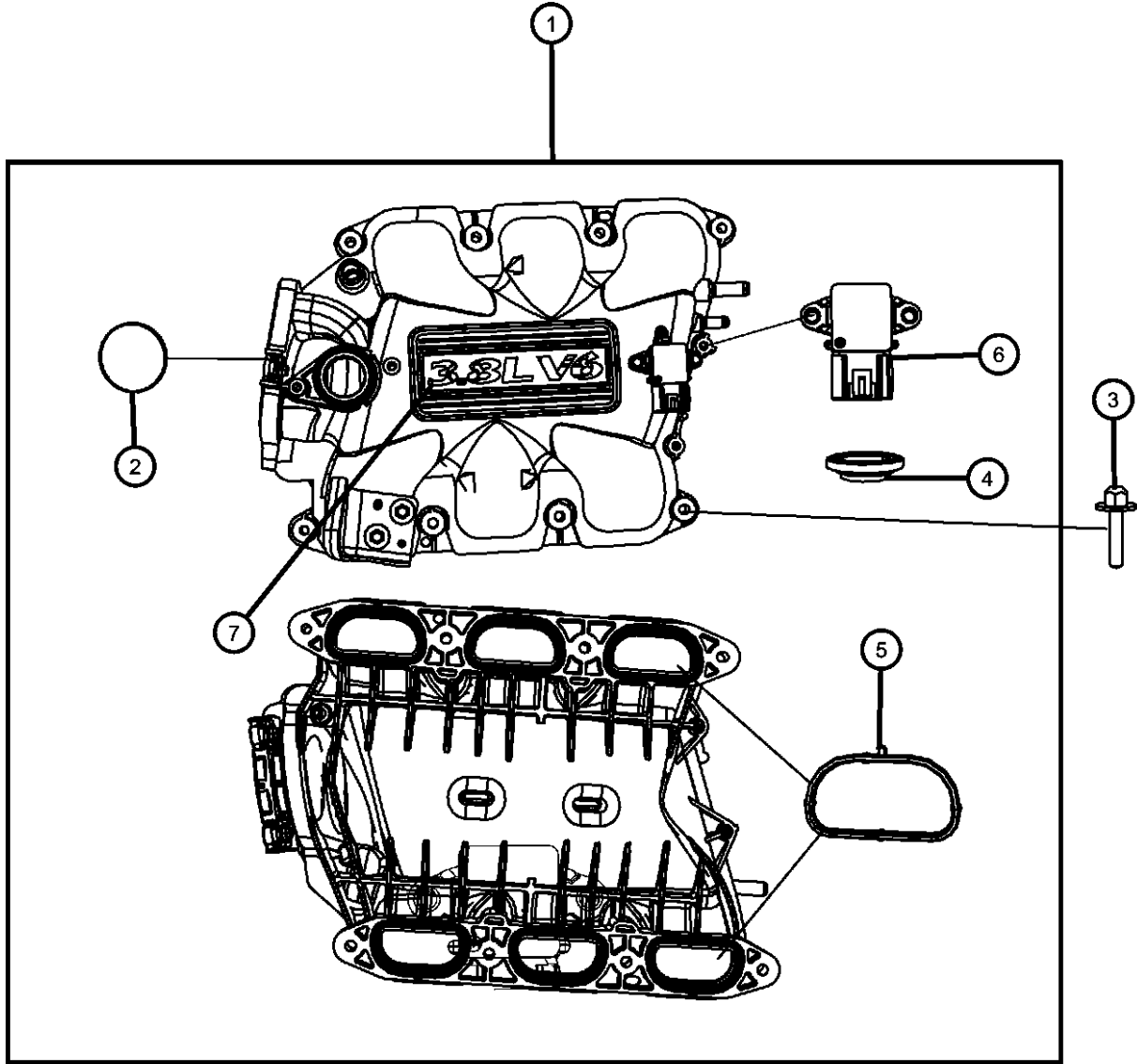


ITEM	PART NUMBER	QTY	LINE	SERIES	BODY	ENGINE	TRANS	TRIM	DESCRIPTION
6	52851574AA	4	J, U						SCREW, M6x1x20
		4	J, T, U						Heat Shield To Exhaust Manifold, Mounting
7	06101444	1	J, U			EGT			Heat Shield To Exhaust Manifold, Mounting, Left
		1	J, T, U			EGT			Heat Shield To Exhaust Manifold, Mounting, Left
		1	J, U			EGT			Heat Shield To Exhaust Manifold, Mounting, Right
		1	J, T, U			EGT			Heat Shield To Exhaust Manifold, Mounting, Right
8	06508305AA	4	J, U			EG0			LOCK NUT, M10-1.50
		4	J, T, U			EG0			Front Pipe To Exhaust Manifold, Mounting
9	06102172AA	4	J, U			EG0			SCREW AND WASHER, Hex Head, M10x1.5x50
		4	J, T, U			EG0			Front Pipe To Exhaust Manifold, Mounting

<b>WRANGLER (JK)</b>				
SERIES	LINE	BODY	ENGINE	TRANSMISSION
P = PREMIUM	T = JEEP - 2WD	72 = SPORT UTILITY 2-DR	EGT = 3.8L V6 SMPI Engine	DEH = 6-Speed Manual NSG370
S = SPORT	J = JEEP - 4WD	TYPE #2	ENS = 2.8L 4 Cyl TD Next	Transmission
M = MEDIUM	U = JEEP - 4WD (RHD)	74 = SPORT UTILITY 4-DR	Generation Engine	DGV = 4-Spd. Automatic VLP 42RLE
L = LOWLINE		TYPE #4		Trans
				DGQ = 5-Spd Automatic 545RFE
				Transmission

AR = use ase required - = Non illustrated part

Intake Manifold Plenum 3.8L [EGT]  
Figure 009EGT-1025



ITEM	PART NUMBER	QTY	LINE	SERIES	BODY	ENGINE	TRANS	TRIM	DESCRIPTION
------	-------------	-----	------	--------	------	--------	-------	------	-------------

NOTE:  
Sales Codes:  
[DBB] = All Manual Transmissions  
[DEH] = 6-Speed Manual NSG370 Transmission  
[DGQ] = 5-Speed Automatic 545RFE Transmission  
[DGV] = 4-Speed Automatic VLP 42RLE Transmission  
[DG0] = All Automatic Transmissions  
[DHE] = Manual Shift On The Fly NVG 241 Generation II Transfer Case  
[DHW] = 4:1 Rock-Trac H.D. Part Time 4WD NVG 241 Transfer Case  
[EGT] = 3.8L V-6 SMPI Engine  
[EG0] = All V-6 Engines  
[ENS] = 2.8L 4 Cylinder Turbo Diesel Next Generation  
[EN0] = All Turbo Diesel Engines  
[NAA] = Federal Emissions  
[NAE] = California Emissions  
[NAS] = 50 State Emissions  
[NA1] = Export Emissions  
[XEF] = Transfer Case Skid Plate Shield

1									PLENUM, Intake Manifold, Includes Items 2,4,5,6,7
	04781578AM	1	J, U			EGT			
		1	J, T, U			EGT			
2									GASKET, Throttle Body
	04666113AA	1	J, U			EGT			
		1	J, T, U			EGT			
3									BOLT, Hex Head Lock, M6X1.00X30.00
	06508248AA	8	J, U			EGT			Upper To Lower Intake, Mounting
		8	J, T, U			EGT			Upper To Lower Intake, Mounting
4									SEAL, EGR Tube
	04667431	1	J, U			EGT			
		1	J, T, U			EGT			
5									SEAL, Intake Manifold
	04781580AA	6	J, U			EGT			
		6	J, T, U			EGT			
6									SENSOR, MAP
	05033310AC	1	J, U			EGT			
		1	J, T, U			EGT			
7									EMBLEM

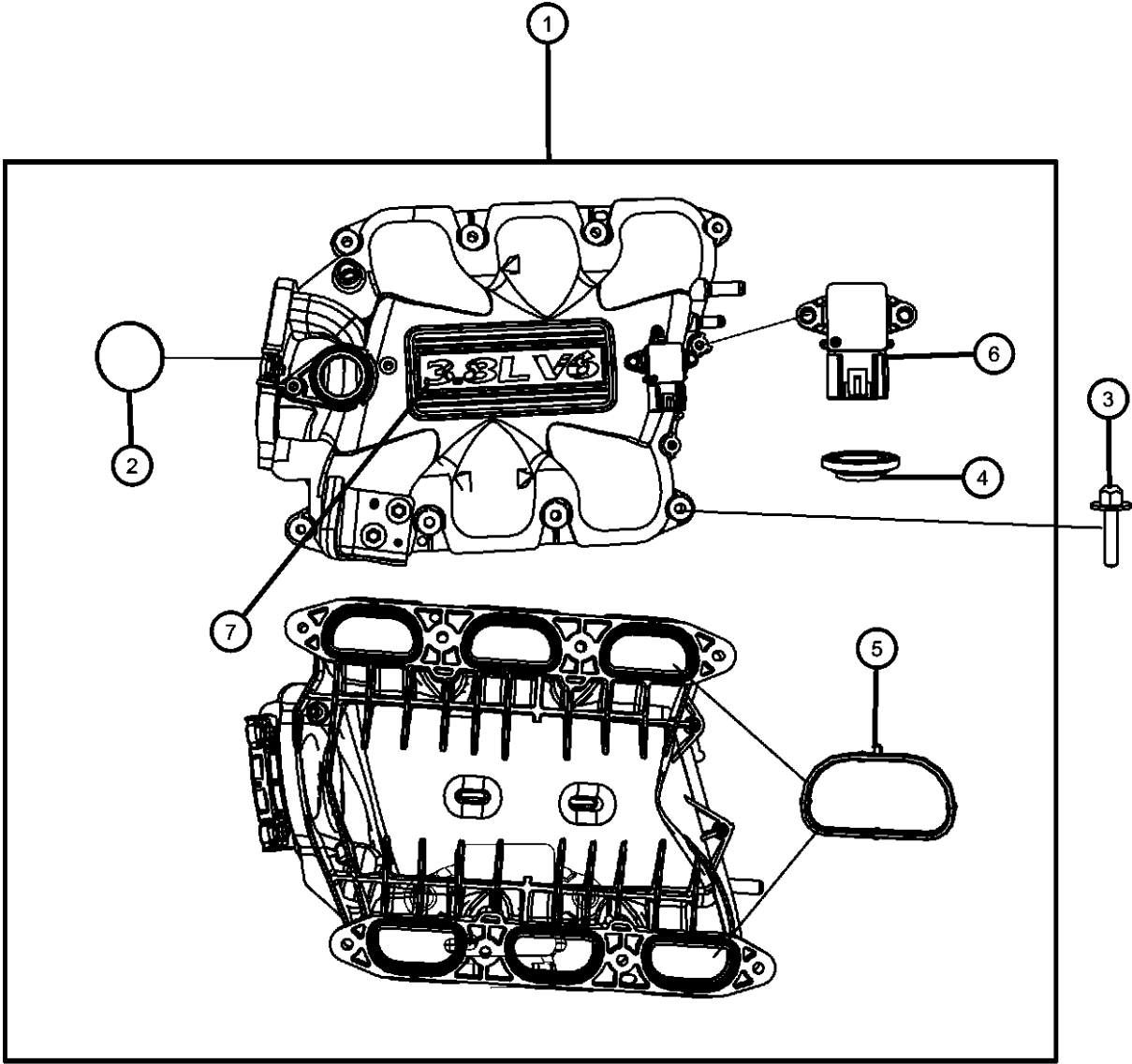
WRANGLER (JK)				
SERIES	LINE	BODY	ENGINE	TRANSMISSION
P = PREMIUM	T = JEEP - 2WD	72 = SPORT UTILITY 2-DR	EGT = 3.8L V6 SMPI Engine	DEH = 6-Speed Manual NSG370
S = SPORT	J = JEEP - 4WD	TYPE #2	ENS = 2.8L 4 Cyl TD Next	Transmission
M = MEDIUM	U = JEEP - 4WD (RHD)	74 = SPORT UTILITY 4-DR	Generation Engine	DGV = 4-Spd. Automatic VLP 42RLE
L = LOWLINE		TYPE #4		Trans
				DGQ = 5-Spd Automatic 545RFE
				Transmission

AR = use ase required - = Non illustrated part

Intake Manifold Plenum 3.8L [EGT]  
Figure 009EGT-1025

ITEM	PART NUMBER	QTY	LINE	SERIES	BODY	ENGINE	TRANS	TRIM	DESCRIPTION
------	-------------	-----	------	--------	------	--------	-------	------	-------------

04648919AA	1	J, U				EGT			
	1	J, T, U				EGT			



WRANGLER (JK)				
SERIES	LINE	BODY	ENGINE	TRANSMISSION
P = PREMIUM	T = JEEP - 2WD	72 = SPORT UTILITY 2-DR	EGT = 3.8L V6 SMPI Engine	DEH = 6-Speed Manual NSG370
S = SPORT	J = JEEP - 4WD	TYPE #2	ENS = 2.8L 4 Cyl TD Next	Transmission
M = MEDIUM	U = JEEP - 4WD (RHD)	74 = SPORT UTILITY 4-DR	Generation Engine	DGV = 4-Spd. Automatic VLP 42RLE
L = LOWLINE		TYPE #4		Trans
				DGQ = 5-Spd Automatic 545RFE
				Transmission

Lower Intake Manifold 3.8L [EGT]  
Figure 009EGT-1065

ITEM	PART NUMBER	QTY	LINE	SERIES	BODY	ENGINE	TRANS	TRIM	DESCRIPTION
------	-------------	-----	------	--------	------	--------	-------	------	-------------

NOTE:  
Sales Codes:  
[DBB] = All Manual Transmissions  
[DEH] = 6-Speed Manual NSG370 Transmission  
[DGQ] = 5-Speed Automatic 545RFE Transmission  
[DGV] = 4-Speed Automatic VLP 42RLE Transmission  
[DGO] = All Automatic Transmissions  
[DHE] = Manual Shift On The Fly NVG 241 Generation II Transfer Case  
[DHW] = 4:1 Rock-Trac H.D. Part Time 4WD NVG 241 Transfer Case  
[EGT] = 3.8L V-6 SMPI Engine  
[EG0] = All V-6 Engines  
[ENS] = 2.8L 4 Cylinder Turbo Diesel Next Generation  
[EN0] = All Turbo Diesel Engines  
[NAA] = Federal Emissions  
[NAE] = California Emissions  
[NAS] = 50 State Emissions  
[NA1] = Export Emissions  
[XEF] = Transfer Case Skid Plate Shield

1	04781035AJ	1	J, T, U			EGT			MANIFOLD, Intake
2									BOLT, Hex Flange Head, M6X1.0X30.00
	06104124AA	2	J, U			EGT			Thermostat Housing To Intake Manifold, Mounting
		2	J, T, U			EGT			Thermostat Housing To Intake Manifold, Mounting
3									NIPPLE, .375-18X2.00
	06035854	1	J, U			EGT			Heater Hose
		1	J, T, U			EGT			Heater Hose
4									GASKET, Intake Manifold
	04781034AB	1	J, U			EGT			
		1	J, T, U			EGT			
5									RAIL, Fuel
	04861666AA	1	J, U			EGT			
		1	J, T, U			EGT			
6									INJECTOR, Fuel
	04861667AA	6	J, U			EGT			
		6	J, T, U			EGT			
7									CLIP, Fuel Injector
	04418257AB	6	J, U			EGT			
		6	J, T, U			EGT			
8									THERMOSTAT

WRANGLER (JK)		BODY		ENGINE	TRANSMISSION
SERIES	LINE				
P = PREMIUM	T = JEEP - 2WD	72 = SPORT UTILITY 2-DR		EGT = 3.8L V6 SMPI Engine	DEH = 6-Speed Manual NSG370
S = SPORT	J = JEEP - 4WD	TYPE #2		ENS = 2.8L 4 Cyl TD Next	Transmission
M = MEDIUM	U = JEEP - 4WD (RHD)	74 = SPORT UTILITY 4-DR		Generation Engine	DGV = 4-Spd. Automatic VLP 42RLE
L = LOWLINE		TYPE #4			Trans
					DGQ = 5-Spd Automatic 545RFE
					Transmission

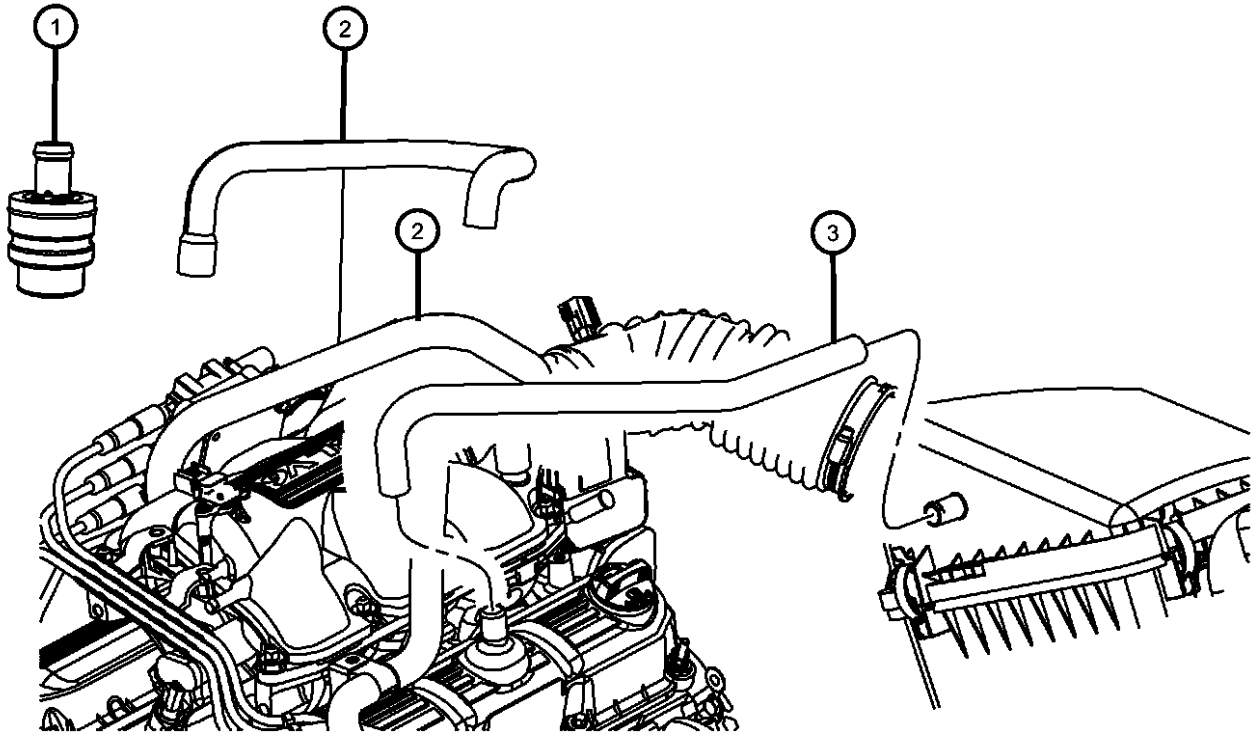


Lower Intake Manifold 3.8L [EGT]  
Figure 009EGT-1065

ITEM	PART NUMBER	QTY	LINE	SERIES	BODY	ENGINE	TRANS	TRIM	DESCRIPTION
9	04666140AA	1	J, U			EGT			HOUSING, Thermostat
		1	J, T, U			EGT			
	04666149AA	1	J, T, U			EGT			
		1	J, U			EGT			
10	05149096AB	1	J, U			EGT			SENSOR, Coolant Temperature
		1	J, T, U			EGT			
11	06508248AA	8	J, U			EGT			BOLT, Hex Head Lock, M6X1.00X30.00 Upper To Lower Intake, Mounting
		8	J, T, U			EGT			
12	06036307AA	2	J, U			EGT			PLUG, Pipe, .250-18X.413
		2	J, T, U			EGT			
13	06102003	4	J, U			EGT			BOLT AND CONED WASHER, Hex Head, M6x16x14 Fuel Rail To Intake Manifold, Mounting
		4	J, T, U			EGT			
14	06102001	2	J, U			EGT			BOLT AND WASHER, M6x12 Lower Intake Manifold Gasket To Cylinder Block, Mounting
		2	J, T, U			EGT			

WRANGLER (JK)		BODY		ENGINE	TRANSMISSION
SERIES	LINE				
P = PREMIUM	T = JEEP - 2WD	72 = SPORT UTILITY 2-DR		EGT = 3.8L V6 SMPI Engine	DEH = 6-Speed Manual NSG370
S = SPORT	J = JEEP - 4WD	TYPE #2		ENS = 2.8L 4 Cyl TD Next	Transmission
M = MEDIUM	U = JEEP - 4WD (RHD)	74 = SPORT UTILITY 4-DR		Generation Engine	DGV = 4-Spd. Automatic VLP 42RLE
L = LOWLINE		TYPE #4			Trans
					DGQ = 5-Spd Automatic 545RFE
					Transmission

Crankcase Ventilation 3.8L [EGT]  
Figure 009EGT-1105



ITEM	PART NUMBER	QTY	LINE	SERIES	BODY	ENGINE	TRANS	TRIM	DESCRIPTION
------	----------------	-----	------	--------	------	--------	-------	------	-------------

NOTE:  
Sales Codes:  
[DBB] = All Manual Transmissions  
[DEH] = 6-Speed Manual NSG370 Transmission  
[DGQ] = 5-Speed Automatic 545RFE Transmission  
[DGV] = 4-Speed Automatic VLP 42RLE Transmission  
[DG0] = All Automatic Transmissions  
[DHE] = Manual Shift On The Fly NVG 241 Generation II Transfer Case  
[DHW] = 4:1 Rock-Trac H.D. Part Time 4WD NVG 241 Transfer Case  
[EGT] = 3.8L V-6 SMPI Engine  
[EG0] = All V-6 Engines  
[ENS] = 2.8L 4 Cylinder Turbo Diesel Next Generation  
[EN0] = All Turbo Diesel Engines  
[NAA] = Federal Emissions  
[NAE] = California Emissions  
[NAS] = 50 State Emissions  
[NA1] = Export Emissions  
[XEF] = Transfer Case Skid Plate Shield

1	04648973AB	1	J, T, U			EGT			VALVE, PCV
2									HOSE, PCV Tube
	04666042AC	1	J, U			EGT			PCV Valve To Intake Manifold
		1	J, T, U			EGT			PCV Valve To Intake Manifold
3									HOSE, Crankcase Vent
	04666041AB	1	J, U			EGT			Make Up Air
		1	J, T, U			EGT			Make Up Air

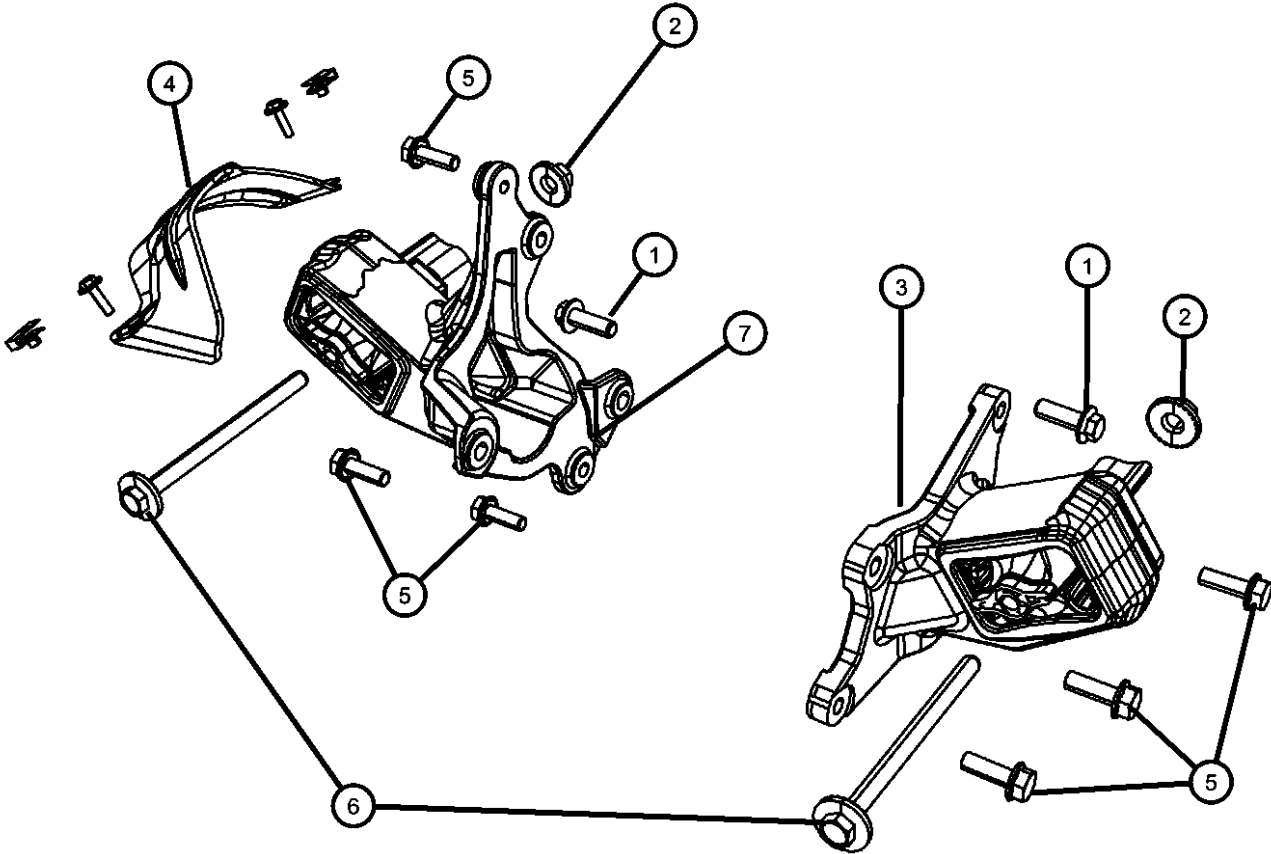
WRANGLER (JK)				
SERIES	LINE	BODY	ENGINE	TRANSMISSION
P = PREMIUM	T = JEEP - 2WD	72 = SPORT UTILITY 2-DR	EGT = 3.8L V6 SMPI Engine	DEH = 6-Speed Manual NSG370
S = SPORT	J = JEEP - 4WD	TYPE #2	ENS = 2.8L 4 Cyl TD Next	Transmission
M = MEDIUM	U = JEEP - 4WD (RHD)	74 = SPORT UTILITY 4-DR	Generation Engine	DGV = 4-Spd. Automatic VLP 42RLE
L = LOWLINE		TYPE #4		Trans
				DGQ = 5-Spd Automatic 545RFE
				Transmission

AR = use ase required - = Non illustrated part

Engine Mounting 3.8L [EGT]  
Figure 009EGT-1205

ITEM	PART NUMBER	QTY	LINE	SERIES	BODY	ENGINE	TRANS	TRIM	DESCRIPTION
------	-------------	-----	------	--------	------	--------	-------	------	-------------

NOTE:  
Sales Codes:  
[DBB] = All Manual Transmissions  
[DEH] = 6-Speed Manual NSG370 Transmission  
[DGQ] = 5-Speed Automatic 545RFE Transmission  
[DGV] = 4-Speed Automatic VLP 42RLE Transmission  
[DG0] = All Automatic Transmissions  
[DHE] = Manual Shift On The Fly NVG 241 Generation II Transfer Case  
[DHW] = 4:1 Rock-Trac H.D. Part Time 4WD NVG 241 Transfer Case  
[EGT] = 3.8L V-6 SMPI Engine  
[EG0] = All V-6 Engines  
[ENS] = 2.8L 4 Cylinder Turbo Diesel Next Generation  
[EN0] = All Turbo Diesel Engines  
[NAA] = Federal Emissions  
[NAE] = California Emissions  
[NAS] = 50 State Emissions  
[NA1] = Export Emissions  
[XEF] = Transfer Case Skid Plate Shield



1									BOLT, M12x1.75x35.00
	06102414AA	2	J, U			EG0			
		2	J, T, U			EG0			
2									NUT AND CONED WASHER, Hex, M12X1.75
	06508169AA	2	J, U			EG0			
		2	J, T, U			EG0			
3	52059940AD	1	J, U			EG0			ISOLATOR, Engine MountRight
4									SHIELD, Engine Mount
	52126193AA	1	J, U			EG0			
		1	J, T, U			EG0			
5	06104044AA	6	J, T, U			EG0			BOLT, Hex Head, Bracket To Engine, Mounting
6									SCREW AND WASHER
	06508576AA	2	J, U			EG0			
		2	J, T, U			EG0			
7	52059943AD	1	J, U			EG0			ISOLATOR, Engine MountLeft

WRANGLER (JK)					
SERIES	LINE	BODY	ENGINE	TRANSMISSION	
P = PREMIUM	T = JEEP - 2WD	72 = SPORT UTILITY 2-DR	EGT = 3.8L V6 SMPI Engine	DEH = 6-Speed Manual NSG370	
S = SPORT	J = JEEP - 4WD	TYPE #2	ENS = 2.8L 4 Cyl TD Next	Transmission	
M = MEDIUM	U = JEEP - 4WD (RHD)	74 = SPORT UTILITY 4-DR	Generation Engine	DGV = 4-Spd. Automatic VLP 42RLE	
L = LOWLINE		TYPE #4		Trans	
				DGQ = 5-Spd Automatic 545RFE	
				Transmission	

AR = use ase required - = Non illustrated part