

Group - 6

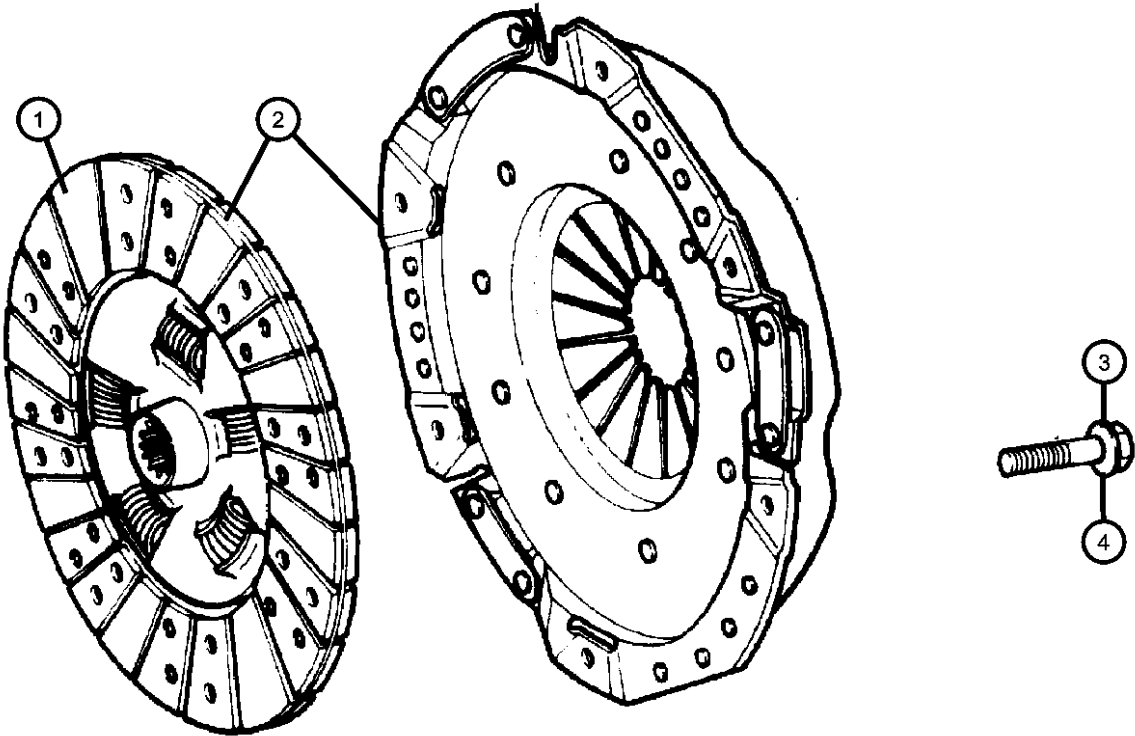
Clutch

Group - 6 Clutch

Illustration Title	Group-Fig. No.
Clutch	
Clutch Assembly	Fig. 6 - 110
Clutch Controls	
Controls,Hydraulic Clutch.....	Fig. 6 - 310
Clutch Pedals	
Pedal,Clutch	Fig. 6 - 410

006-100 Clutch	006-300 Clutch Controls	006-400 Clutch Pedals	
--------------------------	-----------------------------------	---------------------------------	--

Clutch Assembly
Figure 6-110



ITEM	PART NUMBER	QTY	LINE	SERIES	BODY	ENGINE	TRANS	TRIM	DESCRIPTION
Note:Sales Codes [DEH]=6-Speed Manual NSG370 Transmission [EGT]=3.8L V6 SMPI Engine [ENS]=2.8L 4 Cylinder TD Next Generation Engine									
1									DISC, Clutch
	52104733AB	1	J, U			EG0	DBB		
		1	J, T, U			EG0	DBB		
	52104768AA	1	J, U			ENS	DBB		
		1	J, T, U			ENS	DBB		
2									CLUTCH KIT, Pressure Plate and Disc
	52104732AB	1	J, U			EG0	DBB		
		1	J, T, U			EG0	DBB		
	68003193AA	1	J, U			ENS	DBB		
		1	J, T, U			ENS	DBB		
3									BOLT, Hex Flange Head, M8x1.25x16
	06501474	6	J, U			EG0	DBB		Pressure Plate to Flywheel, Mounting
		6	J, T, U			EG0	DBB		Pressure Plate to Flywheel, Mounting
4									BOLT, Hex Flange Head, M8x16
	68027634AA	6	J, U			ENS	DBB		Pressure Plate to Flywheel, Mounting
		6	J, T, U			ENS	DBB		Pressure Plate to Flywheel, Mounting

WRANGLER (JK)		BODY		ENGINE	TRANSMISSION
SERIES	LINE				
P = PREMIUM	T = JEEP - 2WD	72 = SPORT UTILITY 2-DR		EGT = 3.8L V6 SMPI Engine	DEH = 6-Speed Manual NSG370
S = SPORT	J = JEEP - 4WD	TYPE #2		ENS = 2.8L 4 Cyl TD Next	Transmission
M = MEDIUM	U = JEEP - 4WD (RHD)	74 = SPORT UTILITY 4-DR		Generation Engine	DGV = 4-Spd. Automatic VLP 42RLE
L = LOWLINE		TYPE #4			Trans
					DGQ = 5-Spd Automatic 545RFE
					Transmission

Controls,Hydraulic Clutch
Figure 6-310

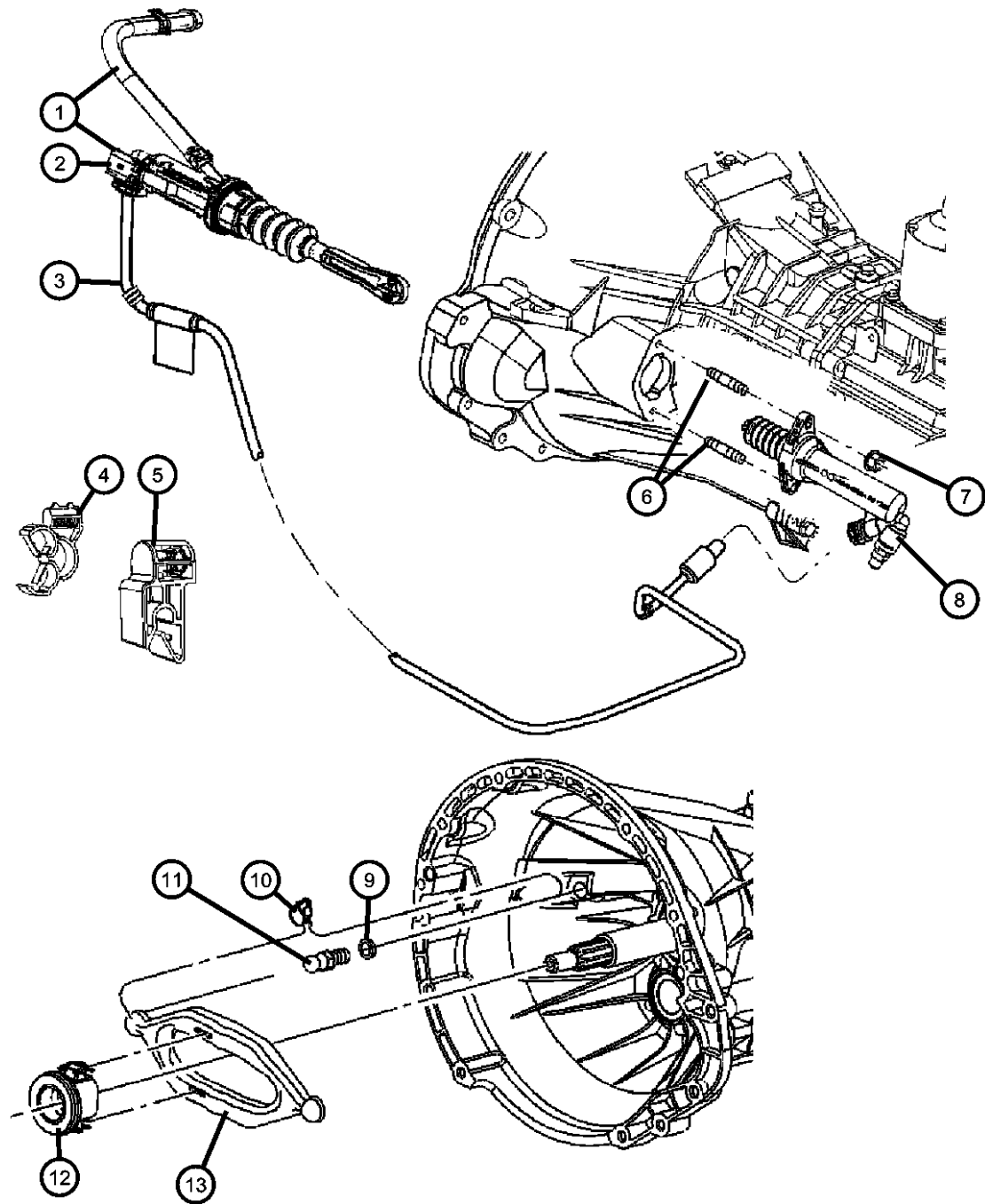
ITEM	PART NUMBER	QTY	LINE	SERIES	BODY	ENGINE	TRANS	TRIM	DESCRIPTION
1									MASTER CYLINDER ASSEMBLY, Clutch
	52060132AC	1	J, U				DBB		
		1	J, T, U				DBB		
2									SWITCH, Clutch Starter Interlock
	68029261AA	1	J, U				DBB		
		1	J, T, U				DBB		
3									TUBE, Hydraulic Clutch
	52060477AE	1	J				DBB		
		1	J, T				DBB		
	52060478AD	1	U				DBB		
4	55398715AA	1	U				DBB		CLIP, Hydraulic Clutch Tube to Body, Mounting
5									CLIP
	04668977AA	1	J				DBB		Hydraulic Clutch Tube to Body, Mounting
		1	J, T				DBB		Hydraulic Clutch Tube, Mounting
6									STUD, Double Ended, M8 x 1.25 x 46.50
	06505668AA	2	J, U				DBB		Slave Cylinder to Clutch Housing, Mounting
		2	J, T, U				DBB		Slave Cylinder to Clutch Housing, Mounting
7									NUT, Hex Flange Lock, M8X1.25
	06104716AA	2	J, U				DBB		Slave Cylinder to Clutch Housing, Mounting
		2	J, T, U				DBB		Slave Cylinder to Clutch Housing, Mounting
8									CYLINDER, Clutch Slave
	52060133AD	1	J, T, U				DBB		
		1	J, U				DBB		
9									WASHER
	06022190	4	J, U			EN0	DEH		
		4	J, U			EG0	DEH		
		4	T			EG0	DEH		
10									SPRING, Clutch Release
	04338855	1	J, U				DBB		
		1	J, T, U				DBB		
11									PIVOT, Clutch Release Lever

WRANGLER (JK)					
SERIES	LINE	BODY	ENGINE	TRANSMISSION	
P = PREMIUM	T = JEEP - 2WD	72 = SPORT UTILITY 2-DR TYPE #2	EGT = 3.8L V6 SMPI Engine	DEH = 6-Speed Manual NSG370 Transmission	
S = SPORT	J = JEEP - 4WD	74 = SPORT UTILITY 4-DR TYPE #4	ENS = 2.8L 4 Cyl TD Next Generation Engine	DGV = 4-Spd. Automatic VLP 42RLE Trans	
M = MEDIUM	U = JEEP - 4WD (RHD)			DGQ = 5-Spd Automatic 545RFE Transmission	
L = LOWLINE					

AR = use ase required - = Non illustrated part

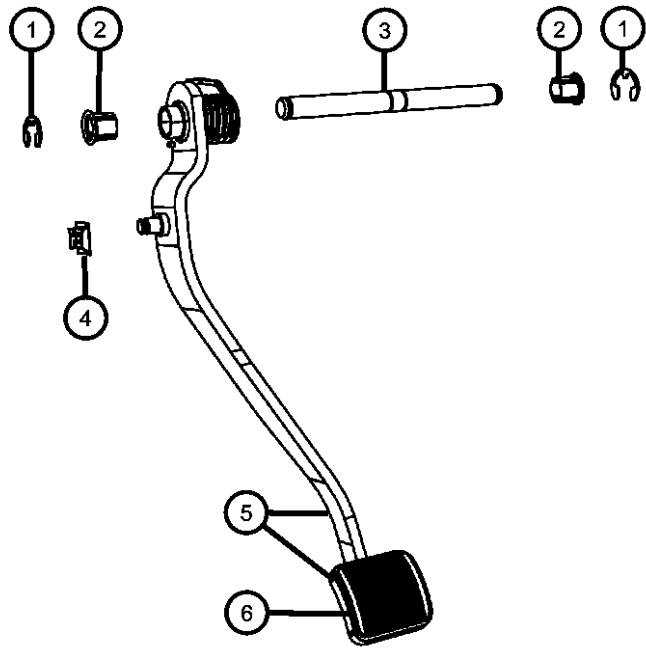
Controls,Hydraulic Clutch
Figure 6-310

ITEM	PART NUMBER	QTY	LINE	SERIES	BODY	ENGINE	TRANS	TRIM	DESCRIPTION
	52087542	1	T			EG0	DEH		
		1	J, U			EG0	DEH		
		1	J, U			EN0	DEH		
12	53008342	1	J, U				DBB		BEARING, Clutch Release
		1	J, T, U				DBB		
13	52107555	1	J, U				DBB		LEVER, Clutch Release
		1	U, J, T				DBB		
-14	55398245AA	1	J, U				DBB		BRACKET, Clutch Tube
		1	J, T, U				DBB		



WRANGLER (JK)					
SERIES	LINE	BODY	ENGINE	TRANSMISSION	
P = PREMIUM	T = JEEP - 2WD	72 = SPORT UTILITY 2-DR	EGT = 3.8L V6 SMPI Engine	DEH = 6-Speed Manual NSG370	
S = SPORT	J = JEEP - 4WD	TYPE #2	ENS = 2.8L 4 Cyl TD Next	Transmission	
M = MEDIUM	U = JEEP - 4WD (RHD)	74 = SPORT UTILITY 4-DR	Generation Engine	DGV = 4-Spd. Automatic VLP 42RLE	
L = LOWLINE		TYPE #4		Trans	
				DGQ = 5-Spd Automatic 545RFE	
				Transmission	

Pedal,Clutch
Figure 6-410



ITEM	PART NUMBER	QTY	LINE	SERIES	BODY	ENGINE	TRANS	TRIM	DESCRIPTION
1	06023879	4	U				DBB		SNAP RING, Pedal Shaft
		1	J						
		1	J, T						
2	52010309AA	8	U				DBB		BUSHING, Pedal Shaft
		7	J				DBB		Pivot
		7	J, T				DBB		Pivot
3	52060461AC	1	J				DBB		SHAFT, Brake Pedal Pivot
		1	J, T				DBB		
	52126094AA	2	U				DBB		
4	04294036	1	J, T, U						CLIP, Master Cylinder Push Rod PinMounting
5	52060412AB	1	J				DBB		PEDAL AND PAD, Clutch
		1	J, T				DBB		
	52060413AB	1	U				DBB		
6	52002750	1	J				DBB		PAD, Pedal
		1	J, T				DBB		
		1	U				DBB		

WRANGLER (JK)				
SERIES	LINE	BODY	ENGINE	TRANSMISSION
P = PREMIUM	T = JEEP - 2WD	72 = SPORT UTILITY 2-DR	EGT = 3.8L V6 SMPI Engine	DEH = 6-Speed Manual NSG370
S = SPORT	J = JEEP - 4WD	TYPE #2	ENS = 2.8L 4 Cyl TD Next	Transmission
M = MEDIUM	U = JEEP - 4WD (RHD)	74 = SPORT UTILITY 4-DR	Generation Engine	DGV = 4-Spd. Automatic VLP 42RLE
L = LOWLINE		TYPE #4		Trans
				DGQ = 5-Spd Automatic 545RFE
				Transmission